



**ST REGIS**  
MIAMI  
THE RESIDENCES

RESIDENCE

**A**

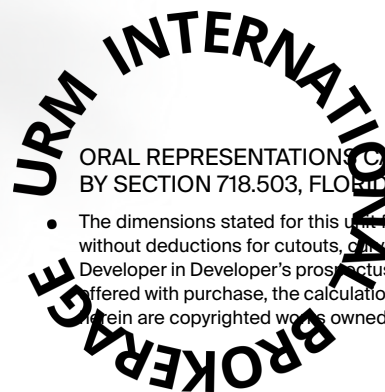
FLOORS 7-18

4 BEDROOMS  
5 BATHROOMS  
1 POWDER ROOM

INTERIOR  
3,712 SF | 344.9 SQM  
EXTERIOR  
941 SF | 87.4 SQM

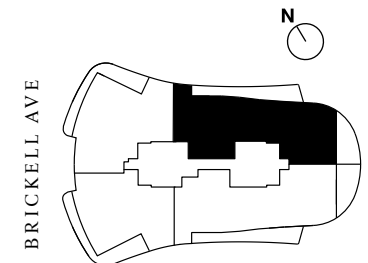


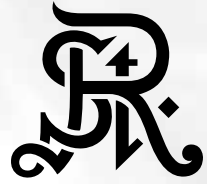
BISCAYNE BAY



ORAL REPRESENTATIONS CANNOT BE RELIED UPON AS CORRECTLY STATING REPRESENTATIONS OF THE DEVELOPER. FOR CORRECT REPRESENTATIONS, MAKE REFERENCE TO THIS BROCHURE AND THE DOCUMENTS REQUIRED BY SECTION 718.503, FLORIDA STATUTES, TO BE FURNISHED BY A DEVELOPER TO A BUYER OR LESSEE.

The dimensions stated for this unit floor plan are approximate because there are various recognized methods for calculating the square footage of a unit. The square footage stated here is calculated from the exterior boundaries of the exterior walls to the centerline of interior demising walls without deductions for cutouts, closets, or architectural features. This method typically results in quoted dimensions greater than the dimensions that would be determined by using other accepted methods. The definition of "Unit" and the calculation method to be relied upon is set forth by the Developer in Developer's prospectus and the method set forth in the Developer's prospectus may result in a square footage calculation less than the method used here. Dimensions and unit configuration may change during construction. Consult the Developer's prospectus to understand what is offered with purchase, the calculation of the Unit square footage and dimensions. Prices are not based on the square footage no matter the method of calculation of unit dimensions and all prices are subject to change at any time. The project graphics, renderings, photographs, and text provided herein are copyrighted works owned by 1809 Brickell Property Owner, LLC 2022.





**ST REGIS**  
MIAMI  
THE RESIDENCES

RESIDENCE

**A**

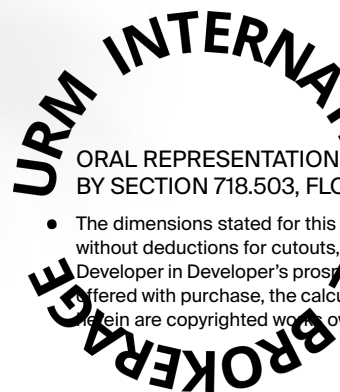
FLOORS 21-30, 33-41

4 BEDROOMS  
5 BATHROOMS  
1 POWDER ROOM

INTERIOR  
3,712 SF | 344.9 SQM  
EXTERIOR  
734 SF | 68.2 SQM

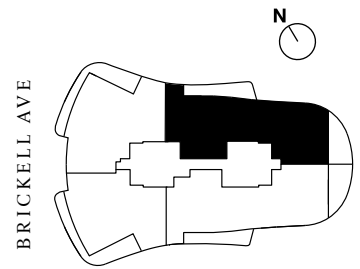


BISCAYNE BAY



ORAL REPRESENTATIONS CANNOT BE RELIED UPON AS CORRECTLY STATING REPRESENTATIONS OF THE DEVELOPER. FOR CORRECT REPRESENTATIONS, MAKE REFERENCE TO THIS BROCHURE AND THE DOCUMENTS REQUIRED BY SECTION 718.503, FLORIDA STATUTES, TO BE FURNISHED BY A DEVELOPER TO A BUYER OR LESSEE.

The dimensions stated for this unit floor plan are approximate because there are various recognized methods for calculating the square footage of a unit. The square footage stated here is calculated from the exterior boundaries of the exterior walls to the centerline of interior demising walls without deductions for cutouts, closets, or architectural features. This method typically results in quoted dimensions greater than the dimensions that would be determined by using other accepted methods. The definition of "Unit" and the calculation method to be relied upon is set forth by the Developer in Developer's prospectus and the method set forth in the Developer's prospectus may result in a square footage calculation less than the method used here. Dimensions and unit configuration may change during construction. Consult the Developer's prospectus to understand what is offered with purchase, the calculation of the Unit square footage and dimensions. Prices are not based on the square footage no matter the method of calculation of unit dimensions and all prices are subject to change at any time. The project graphics, renderings, photographs, and text provided herein are copyrighted works owned by 1809 Brickell Property Owner, LLC 2022.





# ST REGIS

MIAMI  
THE RESIDENCES

RESIDENCE

# B

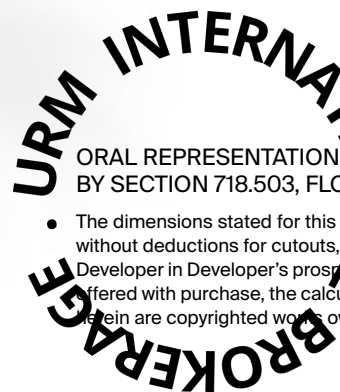
FLOORS 7-18

4 BEDROOMS  
5 BATHROOMS  
1 POWDER ROOM

INTERIOR  
3,679 SF | 341.8 SQM  
EXTERIOR  
941 SF | 87.4 SQM

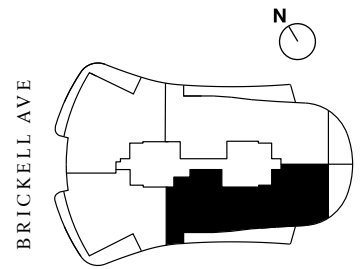


BISCAYNE BAY



ORAL REPRESENTATIONS CANNOT BE RELIED UPON AS CORRECTLY STATING REPRESENTATIONS OF THE DEVELOPER. FOR CORRECT REPRESENTATIONS, MAKE REFERENCE TO THIS BROCHURE AND THE DOCUMENTS REQUIRED BY SECTION 718.503, FLORIDA STATUTES, TO BE FURNISHED BY A DEVELOPER TO A BUYER OR LESSEE.

The dimensions stated for this unit floor plan are approximate because there are various recognized methods for calculating the square footage of a unit. The square footage stated here is calculated from the exterior boundaries of the exterior walls to the centerline of interior demising walls without deductions for cutouts, closets, or architectural features. This method typically results in quoted dimensions greater than the dimensions that would be determined by using other accepted methods. The definition of "Unit" and the calculation method to be relied upon is set forth by the Developer in Developer's prospectus and the method set forth in the Developer's prospectus may result in a square footage calculation less than the method used here. Dimensions and unit configuration may change during construction. Consult the Developer's prospectus to understand what is offered with purchase, the calculation of the Unit square footage and dimensions. Prices are not based on the square footage no matter the method of calculation of unit dimensions and all prices are subject to change at any time. The project graphics, renderings, photographs, and text provided herein are copyrighted works owned by 1809 Brickell Property Owner, LLC 2022.





# ST REGIS MIAMI THE RESIDENCES

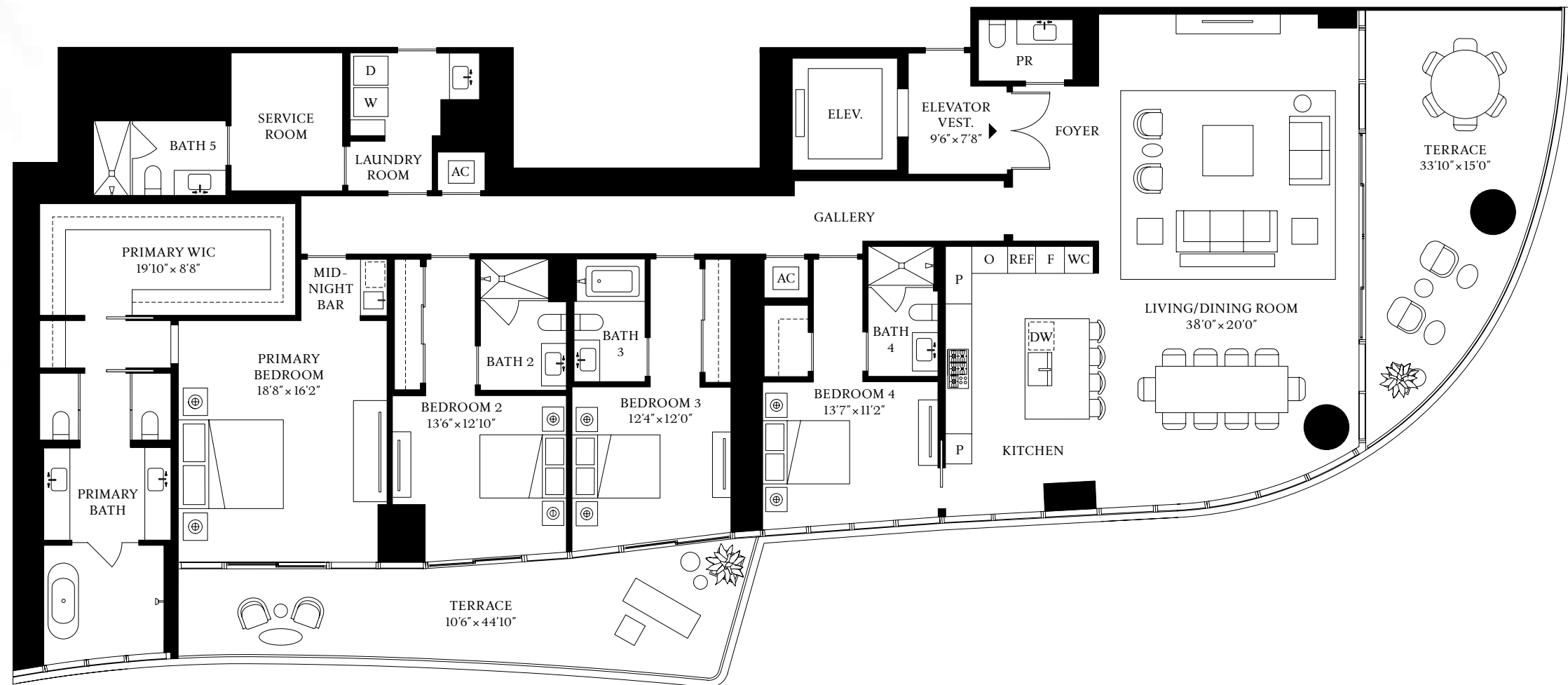
RESIDENCE

# B

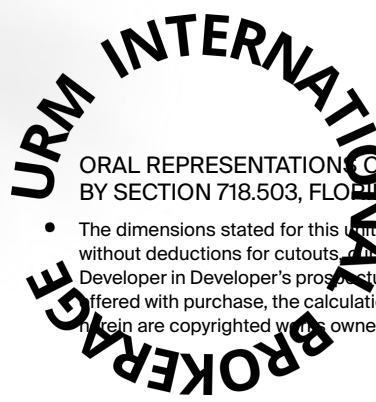
FLOORS 21-30, 33-41

4 BEDROOMS  
5 BATHROOMS  
1 POWDER ROOM

INTERIOR  
3,679 SF | 341.8 SQM  
EXTERIOR  
734 SF | 68.2 SQM

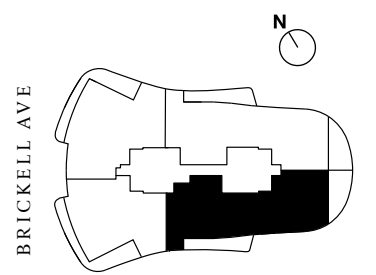


BISCAYNE BAY



ORAL REPRESENTATION CANNOT BE RELIED UPON AS CORRECTLY STATING REPRESENTATIONS OF THE DEVELOPER. FOR CORRECT REPRESENTATIONS, MAKE REFERENCE TO THIS BROCHURE AND THE DOCUMENTS REQUIRED BY SECTION 718.503, FLORIDA STATUTES, TO BE FURNISHED BY A DEVELOPER TO A BUYER OR LESSEE.

The dimensions stated for this unit floor plan are approximate because there are various recognized methods for calculating the square footage of a unit. The square footage stated here is calculated from the exterior boundaries of the exterior walls to the centerline of interior demising walls without deductions for cutouts, closets, or architectural features. This method typically results in quoted dimensions greater than the dimensions that would be determined by using other accepted methods. The definition of "Unit" and the calculation method to be relied upon is set forth by the Developer in Developer's prospectus and the method set forth in the Developer's prospectus may result in a square footage calculation less than the method used here. Dimensions and unit configuration may change during construction. Consult the Developer's prospectus to understand what is offered with purchase, the calculation of the Unit square footage and dimensions. Prices are not based on the square footage no matter the method of calculation of unit dimensions and all prices are subject to change at any time. The project graphics, renderings, photographs, and text provided herein are copyrighted works owned by 1809 Brickell Property Owner, LLC 2022.





**ST REGIS**  
MIAMI  
THE RESIDENCES

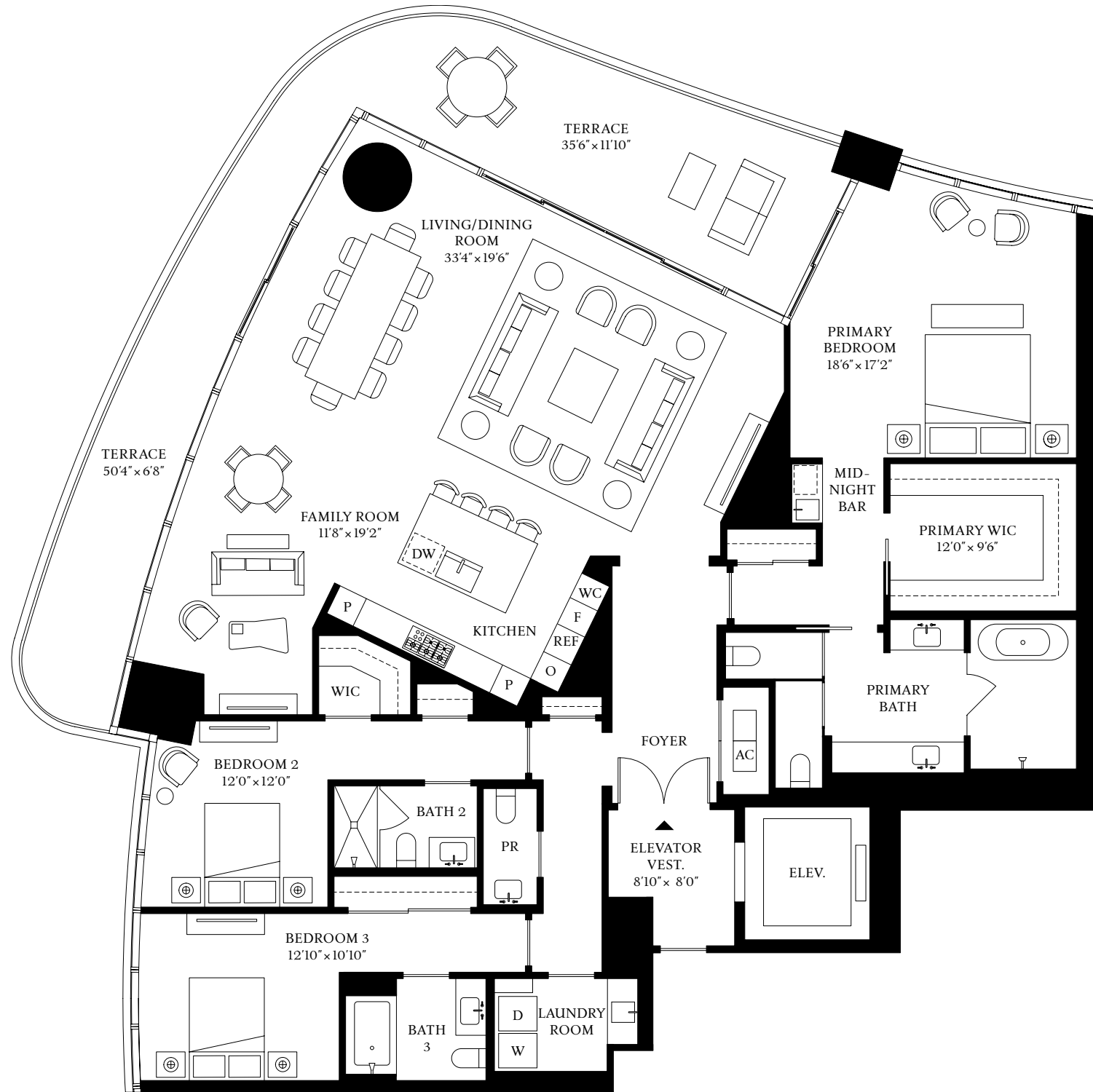
RESIDENCE

**C**

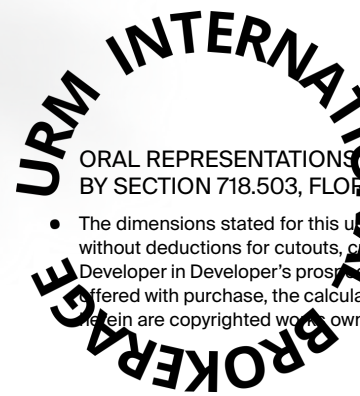
FLOORS 8-18, 21-30, 33-41

3 BEDROOMS  
3 BATHROOMS  
1 POWDER ROOM

INTERIOR  
2,987 SF | 277.5 SQM  
EXTERIOR  
590 SF | 54.8 SQM

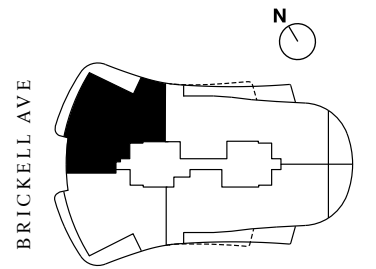


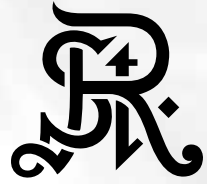
BISCAYNE BAY



ORAL REPRESENTATIONS CANNOT BE RELIED UPON AS CORRECTLY STATING REPRESENTATIONS OF THE DEVELOPER. FOR CORRECT REPRESENTATIONS, MAKE REFERENCE TO THIS BROCHURE AND THE DOCUMENTS REQUIRED BY SECTION 718.503, FLORIDA STATUTES, TO BE FURNISHED BY A DEVELOPER TO A BUYER OR LESSEE.

The dimensions stated for this unit floor plan are approximate because there are various recognized methods for calculating the square footage of a unit. The square footage stated here is calculated from the exterior boundaries of the exterior walls to the centerline of interior demising walls without deductions for cutouts, closets, or architectural features. This method typically results in quoted dimensions greater than the dimensions that would be determined by using other accepted methods. The definition of "Unit" and the calculation method to be relied upon is set forth by the Developer in Developer's prospectus and the method set forth in the Developer's prospectus may result in a square footage calculation less than the method used here. Dimensions and unit configuration may change during construction. Consult the Developer's prospectus to understand what is offered with purchase, the calculation of the Unit square footage and dimensions. Prices are not based on the square footage no matter the method of calculation of unit dimensions and all prices are subject to change at any time. The project graphics, renderings, photographs, and text provided herein are copyrighted works owned by 1809 Brickell Property Owner, LLC 2022.





**ST REGIS**  
MIAMI  
THE RESIDENCES

RESIDENCE

**D**

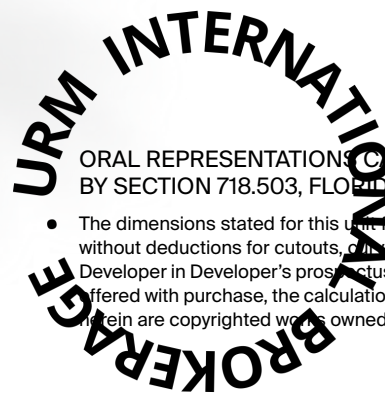
FLOORS 8-18, 21-30, 33-41

2 BEDROOMS  
3 BATHROOMS  
1 POWDER ROOM

INTERIOR  
2,616 SF | 243 SQM  
EXTERIOR  
590 SF | 54.8 SQM

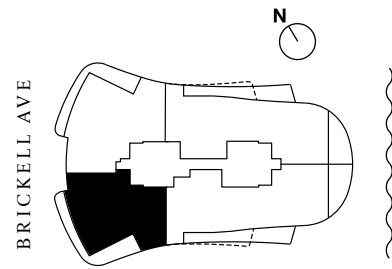


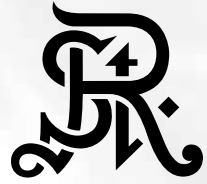
BISCAYNE BAY



ORAL REPRESENTATIONS CANNOT BE RELIED UPON AS CORRECTLY STATING REPRESENTATIONS OF THE DEVELOPER. FOR CORRECT REPRESENTATIONS, MAKE REFERENCE TO THIS BROCHURE AND THE DOCUMENTS REQUIRED BY SECTION 718.503, FLORIDA STATUTES, TO BE FURNISHED BY A DEVELOPER TO A BUYER OR LESSEE.

- The dimensions stated for this unit floor plan are approximate because there are various recognized methods for calculating the square footage of a unit. The square footage stated here is calculated from the exterior boundaries of the exterior walls to the centerline of interior demising walls without deductions for cutouts, niches, or architectural features. This method typically results in quoted dimensions greater than the dimensions that would be determined by using other accepted methods. The definition of "Unit" and the calculation method to be relied upon is set forth by the Developer in Developer's prospectus and the method set forth in the Developer's prospectus may result in a square footage calculation less than the method used here. Dimensions and unit configuration may change during construction. Consult the Developer's prospectus to understand what is offered with purchase, the calculation of the Unit square footage and dimensions. Prices are not based on the square footage no matter the method of calculation of unit dimensions and all prices are subject to change at any time. The project graphics, renderings, photographs, and text provided herein are copyrighted works owned by 1809 Brickell Property Owner, LLC 2022.





**ST REGIS**  
MIAMI  
THE RESIDENCES

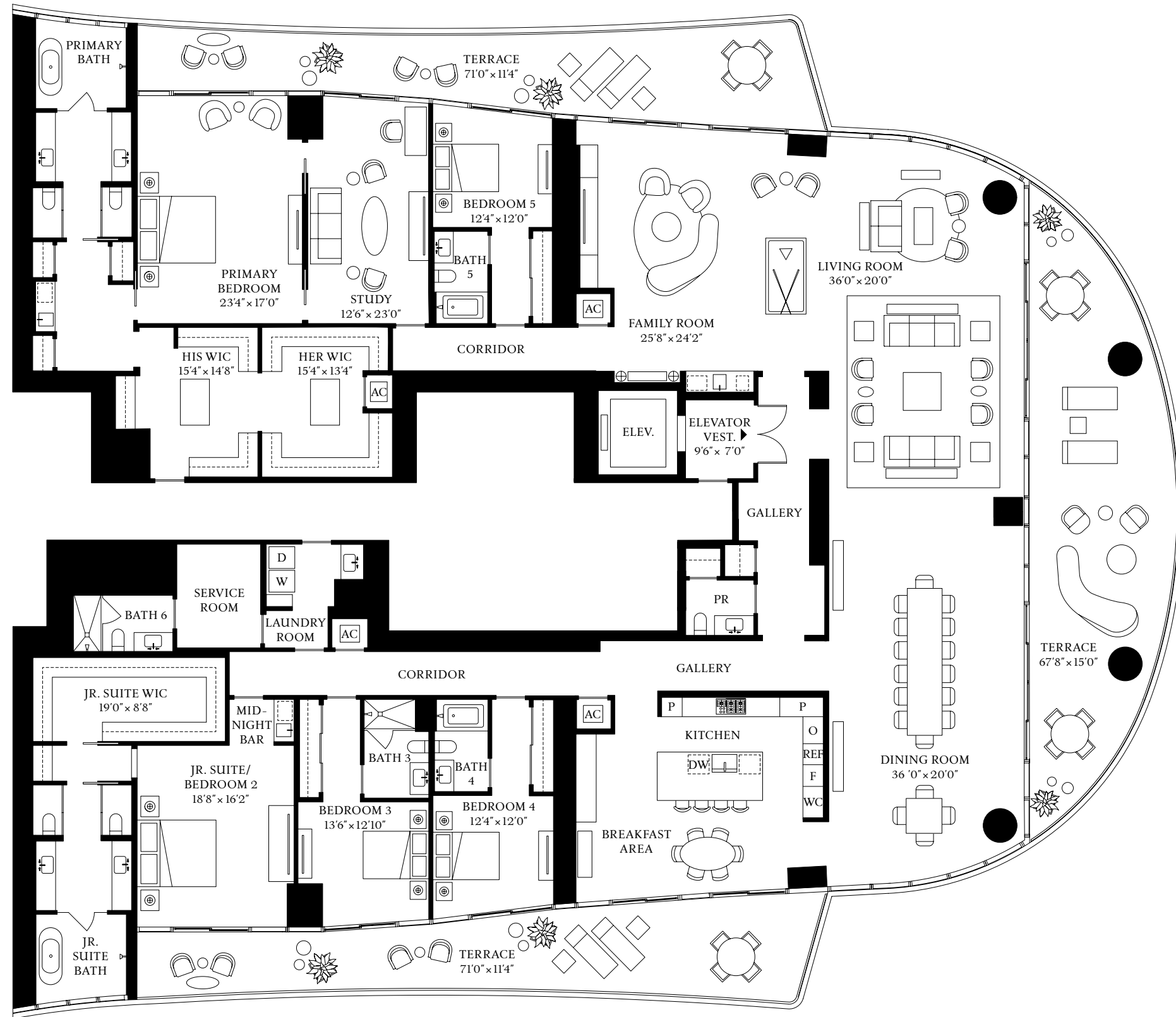
RESIDENCE

**AB**

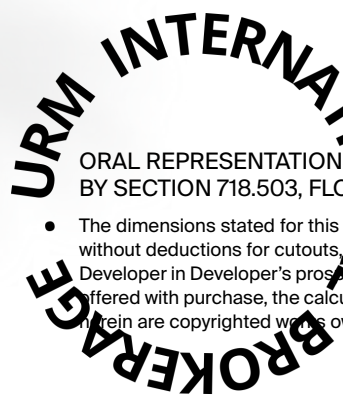
FLOORS 7-18

5 BEDROOMS  
6 BATHROOMS  
1 POWDER ROOM

INTERIOR  
7,391 SF | 686.6 SQM  
EXTERIOR  
1,882 SF | 174.8 SQM



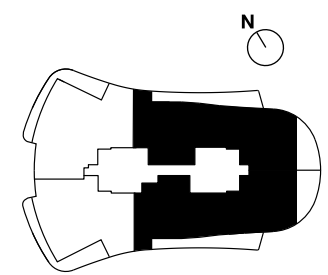
BISCAYNE BAY



ORAL REPRESENTATIONS CANNOT BE RELIED UPON AS CORRECTLY STATING REPRESENTATIONS OF THE DEVELOPER. FOR CORRECT REPRESENTATIONS, MAKE REFERENCE TO THIS BROCHURE AND THE DOCUMENTS REQUIRED BY SECTION 718.503, FLORIDA STATUTES, TO BE FURNISHED BY A DEVELOPER TO A BUYER OR LESSEE.

The dimensions stated for this unit floor plan are approximate because there are various recognized methods for calculating the square footage of a unit. The square footage stated here is calculated from the exterior boundaries of the exterior walls to the centerline of interior demising walls without deductions for cutouts, niches, or architectural features. This method typically results in quoted dimensions greater than the dimensions that would be determined by using other accepted methods. The definition of "Unit" and the calculation method to be relied upon is set forth by the Developer in Developer's prospectus and the method set forth in the Developer's prospectus may result in a square footage calculation less than the method used here. Dimensions and unit configuration may change during construction. Consult the Developer's prospectus to understand what is offered with purchase, the calculation of the Unit square footage and dimensions. Prices are not based on the square footage no matter the method of calculation of unit dimensions and all prices are subject to change at any time. The project graphics, renderings, photographs, and text provided herein are copyrighted works owned by 1809 Brickell Property Owner, LLC 2022.

BRICKELL AVE





# ST REGIS MIAMI THE RESIDENCES

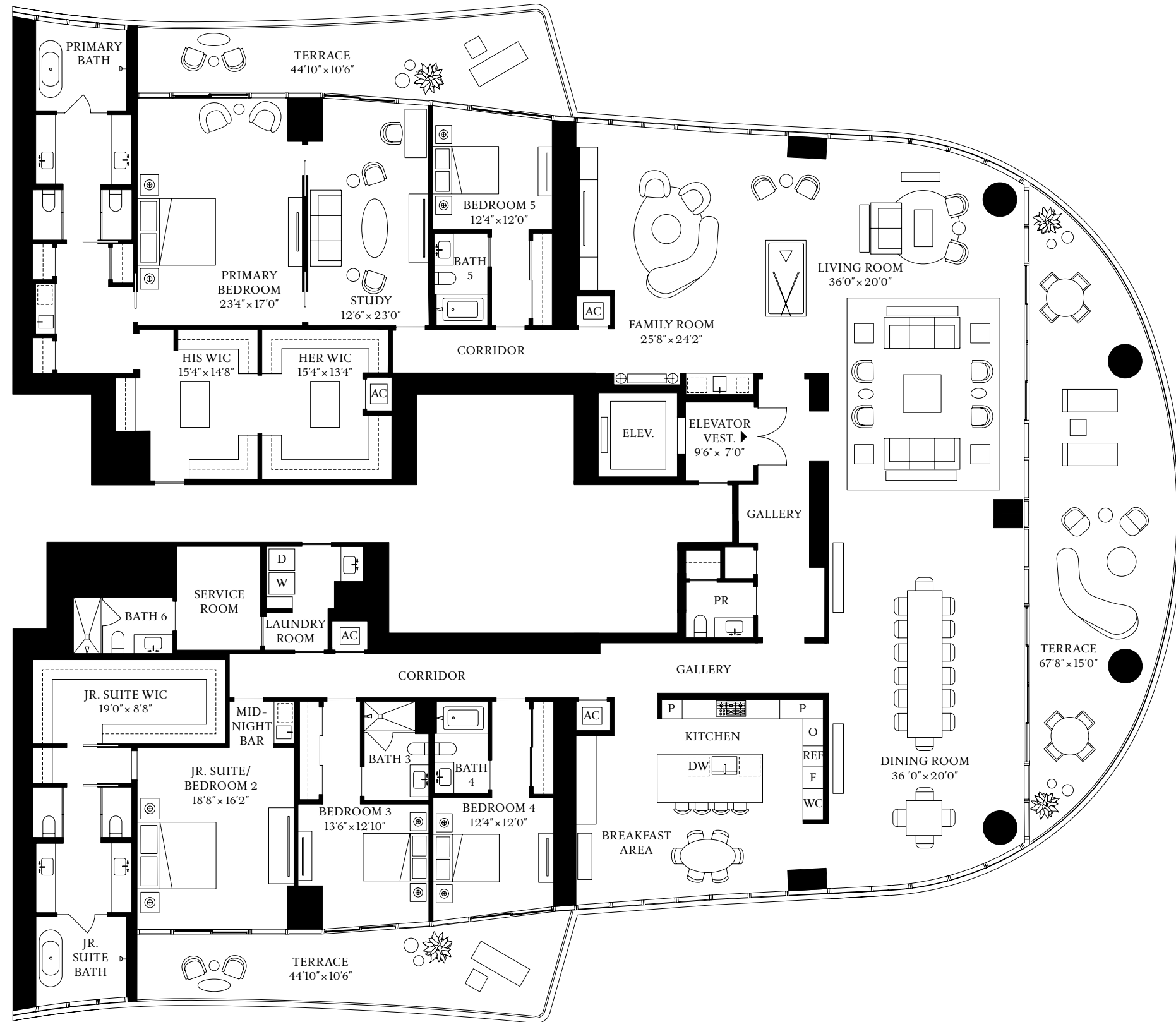
RESIDENCE

# AB

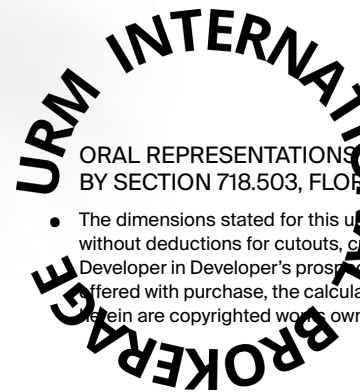
FLOORS 21-30, 33-41

5 BEDROOMS  
6 BATHROOMS  
1 POWDER ROOM

INTERIOR  
7,391 SF | 686.6 SQM  
EXTERIOR  
1,468 SF | 136.4 SQM



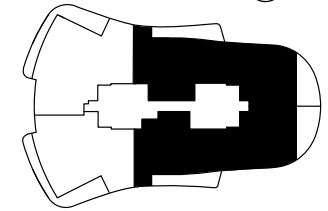
BISCAYNE BAY



ORAL REPRESENTATIONS CANNOT BE RELIED UPON AS CORRECTLY STATING REPRESENTATIONS OF THE DEVELOPER. FOR CORRECT REPRESENTATIONS, MAKE REFERENCE TO THIS BROCHURE AND THE DOCUMENTS REQUIRED BY SECTION 718.503, FLORIDA STATUTES, TO BE FURNISHED BY A DEVELOPER TO A BUYER OR LESSEE.

The dimensions stated for this unit floor plan are approximate because there are various recognized methods for calculating the square footage of a unit. The square footage stated here is calculated from the exterior boundaries of the exterior walls to the centerline of interior demising walls without deductions for cutouts, closets, or architectural features. This method typically results in quoted dimensions greater than the dimensions that would be determined by using other accepted methods. The definition of "Unit" and the calculation method to be relied upon is set forth by the Developer in Developer's prospectus and the method set forth in the Developer's prospectus may result in a square footage calculation less than the method used here. Dimensions and unit configuration may change during construction. Consult the Developer's prospectus to understand what is offered with purchase, the calculation of the Unit square footage and dimensions. Prices are not based on the square footage no matter the method of calculation of unit dimensions and all prices are subject to change at any time. The project graphics, renderings, photographs, and text provided herein are copyrighted works owned by 1809 Brickell Property Owner, LLC 2022.

BRICKELL AVE







# ST REGIS MIAMI THE RESIDENCES

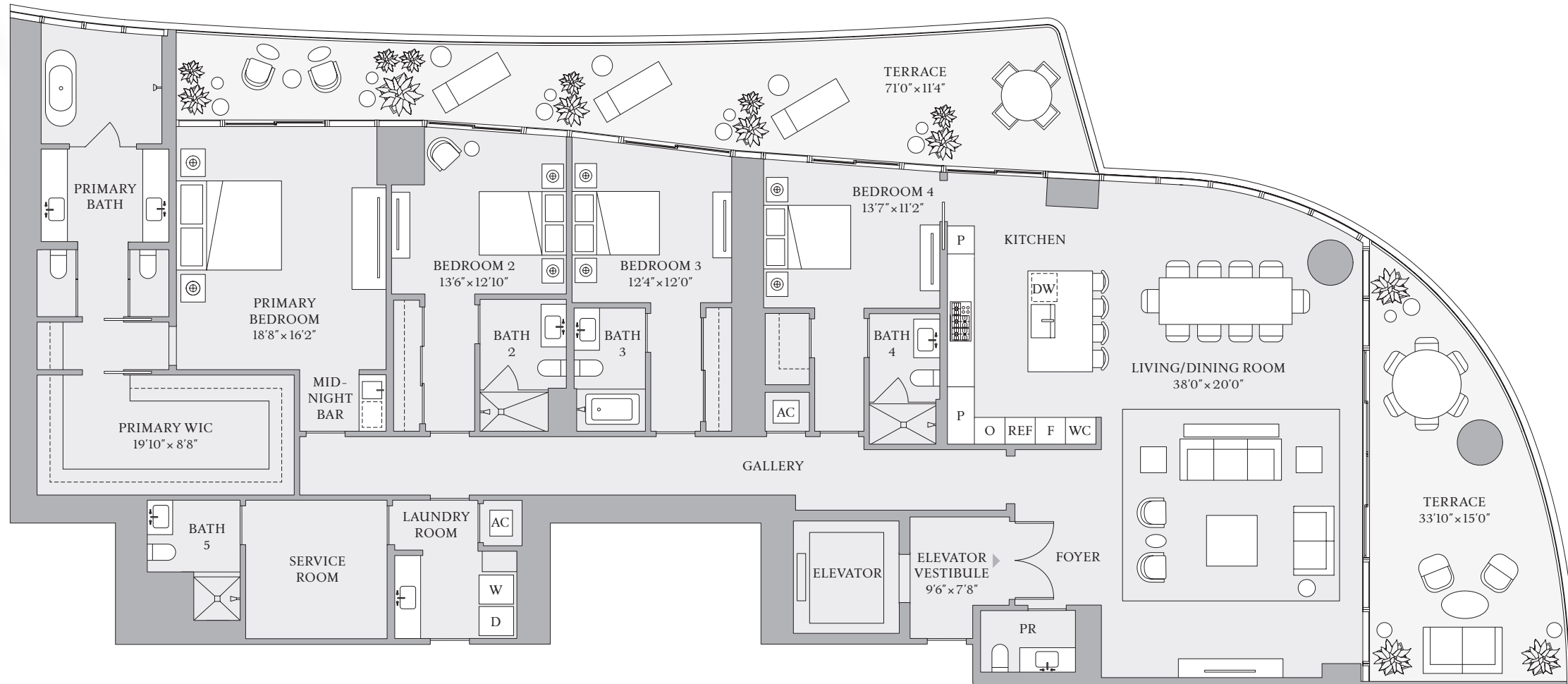
RESIDENCE

# A

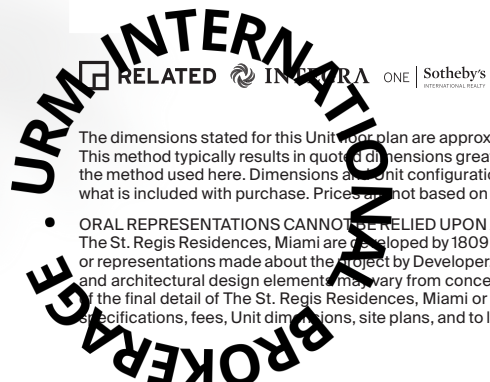
FLOORS 8-18

4 BEDROOMS  
5 BATHROOMS  
1 POWDER ROOM

INTERIOR  
3,712 SF | 344.9 SQM  
EXTERIOR  
941 SF | 87.4 SQM



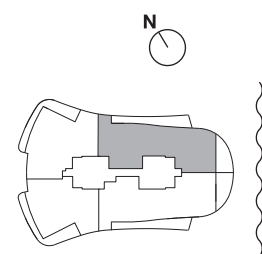
BISCAYNE BAY



The dimensions stated for this Unit floor plan are approximate because there are various recognized methods for calculating the square footage of a Unit. The square footage stated here is calculated from the exterior boundaries of the exterior walls to the centerline of interior demising walls without deductions for cutouts, curves, or architectural features. This method typically results in quoted dimensions greater than the dimensions that would be determined by using other accepted methods. The definition of "Unit" and the calculation method to be relied upon is set forth in Developer's prospectus and the method set forth in the Developer's prospectus may result in a square footage calculation less than the method used here. Dimensions and unit configuration may change during construction. The furniture illustrated is not included with purchase; the floorplan layout is not a guaranty on your use of space but is one example of uses of space. Consult the Developer's prospectus to understand the calculation of the Unit square footage and dimensions and what is included with purchase. Prices are not based on the square footage no matter the method of calculation of Unit dimensions and all prices are subject to change at any time.

ORAL REPRESENTATIONS CANNOT BE RELIED UPON AS CORRECTLY STATING REPRESENTATIONS OF THE DEVELOPER. FOR CORRECT REPRESENTATIONS, MAKE REFERENCE TO THIS BROCHURE AND TO THE DOCUMENTS REQUIRED BY SECTION 718.503, FLORIDA STATUTES, TO BE FURNISHED BY A DEVELOPER TO A BUYER OR LESSEE. The St. Regis Residences, Miami are developed by 1809 Brickell Property Owner, LLC ("Developer"). The St. Regis Residences, Miami are not owned, developed, or sold by Marriott International, Inc. or its affiliates ("Marriott"). The Developer uses the St. Regis marks under a license from Marriott, which has not confirmed the accuracy of any of the statements or representations made about the project by Developer. Sketches, renderings, or photographs depicting a floor plan are proposed only and the Developer reserves the right to modify, revise, or withdraw any or all of the same in Developer's sole discretion without prior notice. Locations and layouts of windows, doors, closets, plumbing fixtures, and structural and architectural design elements may vary from concept to actual construction. All depictions of appliances, plumbing fixtures, counters, countertops, cabinets, soffits, floor coverings, and other matters of design and décor detail or floor plans are conceptual and such drawings shown should not be relied upon as representations, express or implied. For the final detail of The St. Regis Residences, Miami or any Unit. There is no guarantee that any proposed hotel brands will be involved as depicted or at all upon, or following, the completion of The St. Regis Residences, Miami. Consult the prospectus of the Developer to understand this offering, the amenities, the proposed budgets, terms, conditions, specifications, fees, Unit dimensions, site plans, and to learn what is included with purchase and by payment of regular assessments. All prices are subject to change at any time and without notice and do not include optional features, design packages, furniture packages, or premiums for upgrades to any Unit. © 1809 Brickell Property Owner, LLC 2023.

BRICKELL AVE





# ST REGIS MIAMI THE RESIDENCES

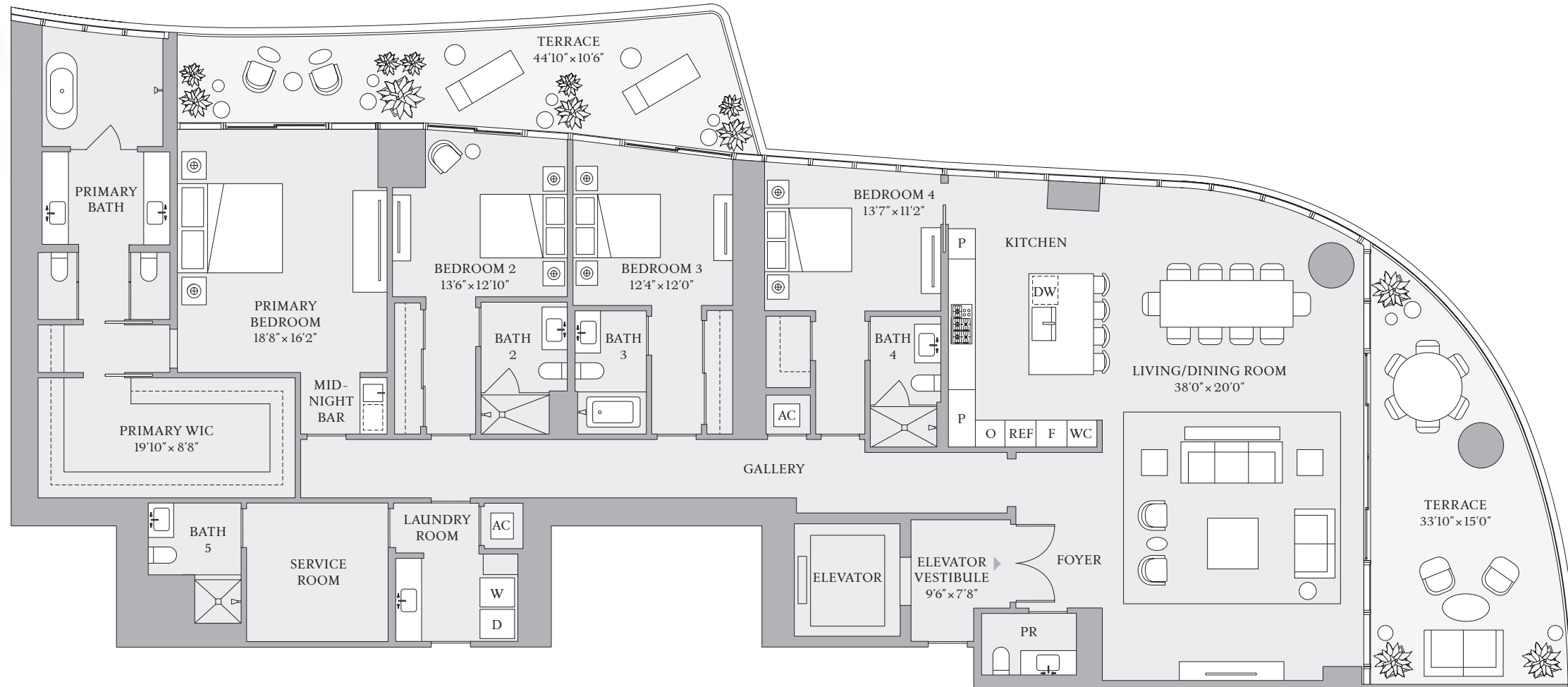
RESIDENCE

# A

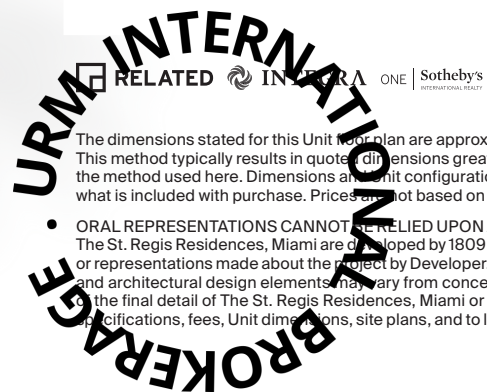
FLOORS 21-30, 33-41

4 BEDROOMS  
5 BATHROOMS  
1 POWDER ROOM

INTERIOR  
3,712 SF | 344.9 SQM  
EXTERIOR  
734 SF | 68.2 SQM



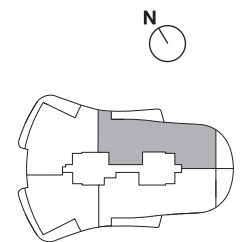
BISCAYNE BAY



The dimensions stated for this Unit floor plan are approximate because there are various recognized methods for calculating the square footage of a Unit. The square footage stated here is calculated from the exterior boundaries of the exterior walls to the centerline of interior demising walls without deductions for cutouts, curves, or architectural features. This method typically results in quoted dimensions greater than the dimensions that would be determined by using other accepted methods. The definition of "Unit" and the calculation method to be relied upon is set forth in Developer's prospectus and the method set forth in the Developer's prospectus may result in a square footage calculation less than the method used here. Dimensions and unit configuration may change during construction. The furniture illustrated is not included with purchase; the floorplan layout is not a guaranty on your use of space but is one example of uses of space. Consult the Developer's prospectus to understand the calculation of the Unit square footage and dimensions and what is included with purchase. Prices are not based on the square footage no matter the method of calculation of Unit dimensions and all prices are subject to change at any time.

ORAL REPRESENTATIONS CANNOT BE RELIED UPON AS CORRECTLY STATING REPRESENTATIONS OF THE DEVELOPER. FOR CORRECT REPRESENTATIONS, MAKE REFERENCE TO THIS BROCHURE AND TO THE DOCUMENTS REQUIRED BY SECTION 718.503, FLORIDA STATUTES, TO BE FURNISHED BY A DEVELOPER TO A BUYER OR LESSEE. The St. Regis Residences, Miami are developed by 1809 Brickell Property Owner, LLC ("Developer"). The St. Regis Residences, Miami are not owned, developed, or sold by Marriott International, Inc. or its affiliates ("Marriott"). The Developer uses the St. Regis marks under a license from Marriott, which has not confirmed the accuracy of any of the statements or representations made about the project by Developer. Sketches, renderings, or photographs depicting a floor plan are proposed only and the Developer reserves the right to modify, revise, or withdraw any or all of the same in Developer's sole discretion without prior notice. Locations and layouts of windows, doors, closets, plumbing fixtures, and structural and architectural design elements may vary from concept to actual construction. All depictions of appliances, plumbing fixtures, counters, countertops, cabinets, soffits, floor coverings, and other matters of design and décor detail or floor plans are conceptual and such drawings shown should not be relied upon as representations, express or implied, of the final detail of The St. Regis Residences, Miami or any Unit. There is no guarantee that any proposed hotel brands will be involved as depicted or at all upon, or following, the completion of The St. Regis Residences, Miami. Consult the prospectus of the Developer to understand this offering, the amenities, the proposed budgets, terms, conditions, specifications, fees, Unit dimensions, site plans, and to learn what is included with purchase and by payment of regular assessments. All prices are subject to change at any time and without notice and do not include optional features, design packages, furniture packages, or premiums for upgrades to any Unit. © 1809 Brickell Property Owner, LLC 2023.

BRICKELL AVE





**ST REGIS**  
MIAMI  
THE RESIDENCES

RESIDENCE

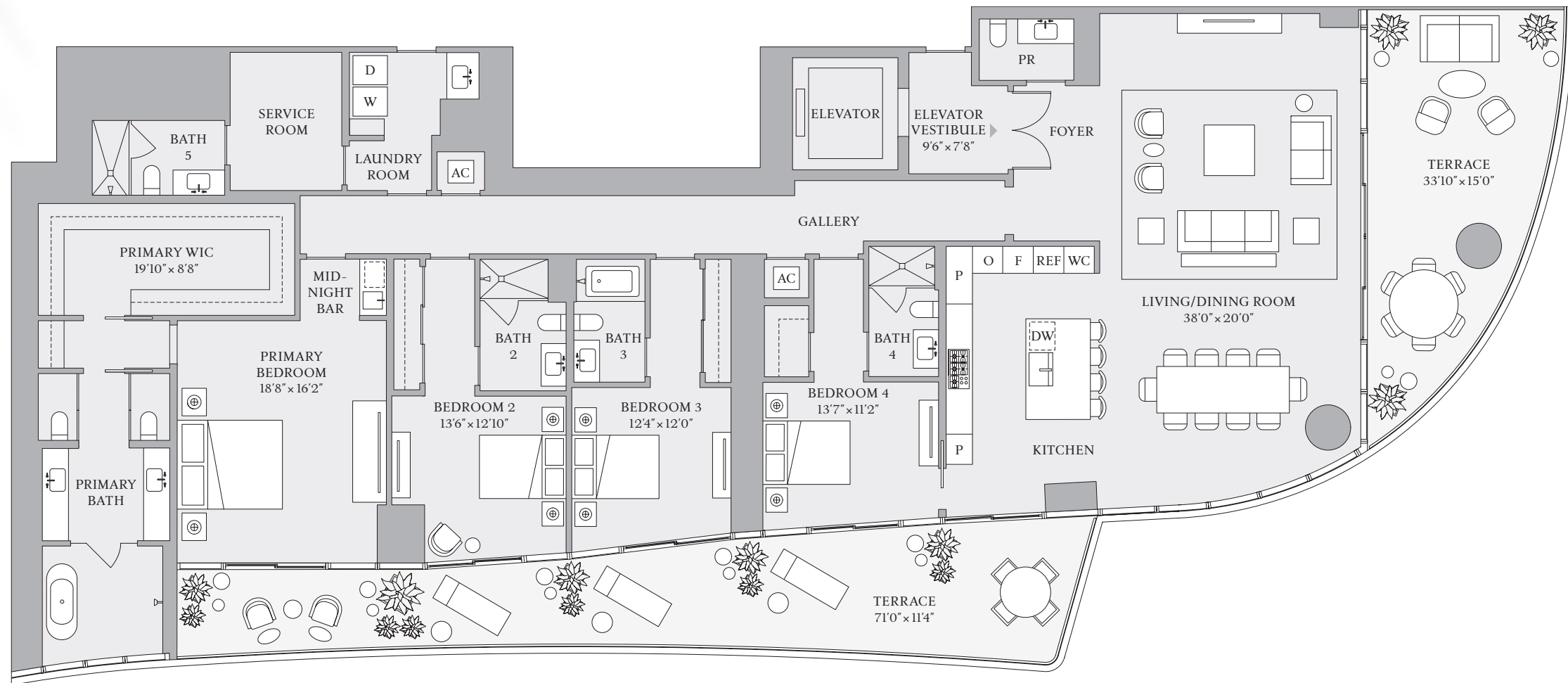
**B**

FLOORS 8-18

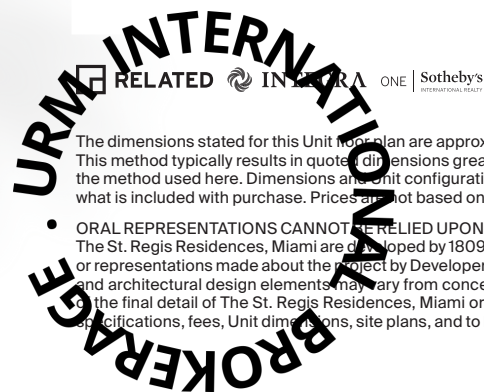
4 BEDROOMS  
5 BATHROOMS  
1 POWDER ROOM

INTERIOR  
3,679 SF | 341.8 SQM

EXTERIOR  
941 SF | 87.4 SQM

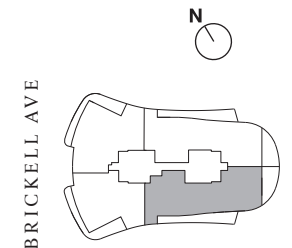


BISCAYNE BAY



The dimensions stated for this Unit floor plan are approximate because there are various recognized methods for calculating the square footage of a Unit. The square footage stated here is calculated from the exterior boundaries of the exterior walls to the centerline of interior demising walls without deductions for cutouts, curves, or architectural features. This method typically results in quoted dimensions greater than the dimensions that would be determined by using other accepted methods. The definition of "Unit" and the calculation method to be relied upon is set forth in Developer's prospectus and the method set forth in the Developer's prospectus may result in a square footage calculation less than the method used here. Dimensions and unit configuration may change during construction. The furniture illustrated is not included with purchase; the floorplan layout is not a guaranty on your use of space but is one example of uses of space. Consult the Developer's prospectus to understand the calculation of the Unit square footage and dimensions and what is included with purchase. Prices are not based on the square footage no matter the method of calculation of Unit dimensions and all prices are subject to change at any time.

ORAL REPRESENTATIONS CANNOT BE RELIED UPON AS CORRECTLY STATING REPRESENTATIONS OF THE DEVELOPER. FOR CORRECT REPRESENTATIONS, MAKE REFERENCE TO THIS BROCHURE AND TO THE DOCUMENTS REQUIRED BY SECTION 718.503, FLORIDA STATUTES, TO BE FURNISHED BY A DEVELOPER TO A BUYER OR LESSEE. The St. Regis Residences, Miami are developed by 1809 Brickell Property Owner, LLC ("Developer"). The St. Regis Residences, Miami are not owned, developed, or sold by Marriott International, Inc. or its affiliates ("Marriott"). The Developer uses the St. Regis marks under a license from Marriott, which has not confirmed the accuracy of any of the statements or representations made about the project by Developer. Sketches, renderings, or photographs depicting a floor plan are proposed only and the Developer reserves the right to modify, revise, or withdraw any or all of the same in Developer's sole discretion without prior notice. Locations and layouts of windows, doors, closets, plumbing fixtures, and structural and architectural design elements may vary from concept to actual construction. All depictions of appliances, plumbing fixtures, counters, countertops, cabinets, soffits, floor coverings, and other matters of design and décor detail or floor plans are conceptual and such drawings shown should not be relied upon as representations, express or implied, of the final detail of The St. Regis Residences, Miami or any Unit. There is no guarantee that any proposed hotel brands will be involved as depicted or at all upon, or following, the completion of The St. Regis Residences, Miami. Consult the prospectus of the Developer to understand this offering, the amenities, the proposed budgets, terms, conditions, specifications, fees, Unit dimensions, site plans, and to learn what is included with purchase and by payment of regular assessments. All prices are subject to change at any time and without notice and do not include optional features, design packages, furniture packages, or premiums for upgrades to any Unit. © 1809 Brickell Property Owner, LLC 2023.



BRICKELL AVE



# ST REGIS

MIAMI  
THE RESIDENCES

RESIDENCE

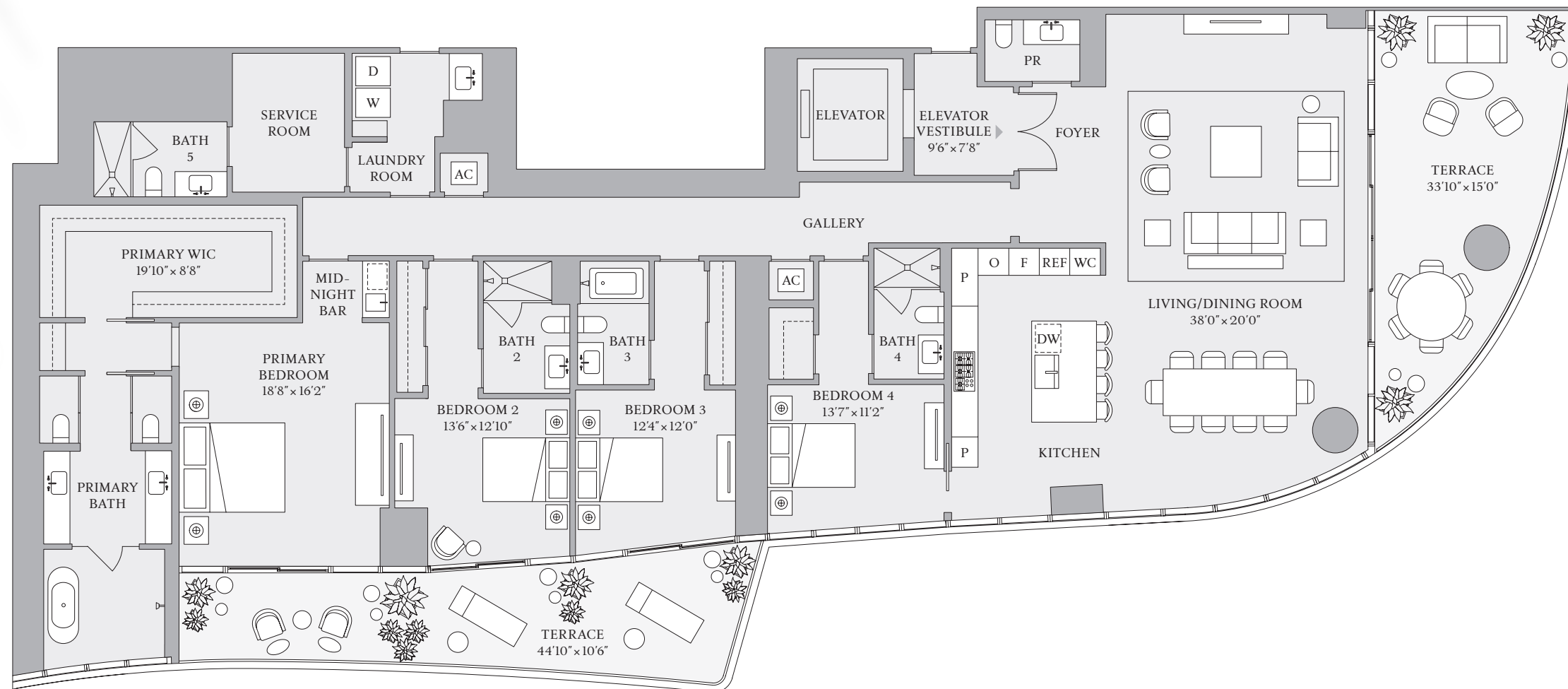
# B

FLOORS 21-30, 33-41

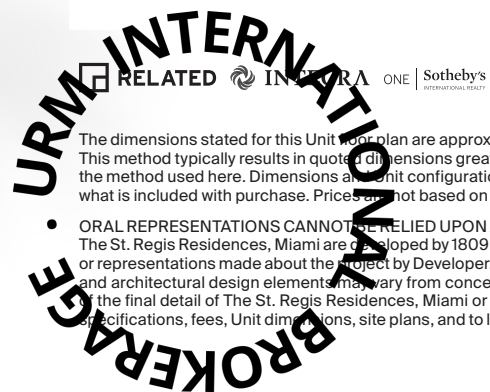
4 BEDROOMS  
5 BATHROOMS  
1 POWDER ROOM

INTERIOR  
3,679 SF | 341.8 SQM

EXTERIOR  
734 SF | 68.2 SQM

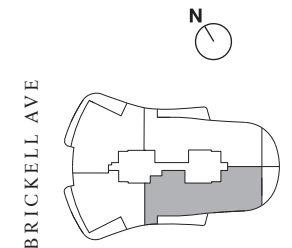


BISCAYNE BAY



The dimensions stated for this Unit floor plan are approximate because there are various recognized methods for calculating the square footage of a Unit. The square footage stated here is calculated from the exterior boundaries of the exterior walls to the centerline of interior demising walls without deductions for cutouts, curves, or architectural features. This method typically results in quoted dimensions greater than the dimensions that would be determined by using other accepted methods. The definition of "Unit" and the calculation method to be relied upon is set forth in Developer's prospectus and the method set forth in the Developer's prospectus may result in a square footage calculation less than the method used here. Dimensions and unit configuration may change during construction. The furniture illustrated is not included with purchase; the floorplan layout is not a guaranty on your use of space but is one example of uses of space. Consult the Developer's prospectus to understand the calculation of the Unit square footage and dimensions and what is included with purchase. Prices are not based on the square footage no matter the method of calculation of Unit dimensions and all prices are subject to change at any time.

ORAL REPRESENTATIONS CANNOT BE RELIED UPON AS CORRECTLY STATING REPRESENTATIONS OF THE DEVELOPER. FOR CORRECT REPRESENTATIONS, MAKE REFERENCE TO THIS BROCHURE AND TO THE DOCUMENTS REQUIRED BY SECTION 718.503, FLORIDA STATUTES, TO BE FURNISHED BY A DEVELOPER TO A BUYER OR LESSEE. The St. Regis Residences, Miami are developed by 1809 Brickell Property Owner, LLC ("Developer"). The St. Regis Residences, Miami are not owned, developed, or sold by Marriott International, Inc. or its affiliates ("Marriott"). The Developer uses the St. Regis marks under a license from Marriott, which has not confirmed the accuracy of any of the statements or representations made about the subject by Developer. Sketches, renderings, or photographs depicting a floor plan are proposed only and the Developer reserves the right to modify, revise, or withdraw any or all of the same in Developer's sole discretion without prior notice. Locations and layouts of windows, doors, closets, plumbing fixtures, and structural and architectural design elements may vary from concept to actual construction. All depictions of appliances, plumbing fixtures, counters, countertops, cabinets, soffits, floor coverings, and other matters of design and décor detail or floor plans are conceptual and such drawings shown should not be relied upon as representations, express or implied, of the final detail of The St. Regis Residences, Miami or any Unit. There is no guarantee that any proposed hotel brands will be involved as depicted or at all upon, or following, the completion of The St. Regis Residences, Miami. Consult the prospectus of the Developer to understand this offering, the amenities, the proposed budgets, terms, conditions, specifications, fees, Unit dimensions, site plans, and to learn what is included with purchase and by payment of regular assessments. All prices are subject to change at any time and without notice and do not include optional features, design packages, furniture packages, or premiums for upgrades to any Unit. © 1809 Brickell Property Owner, LLC 2023.



BRICKELL AVE



# ST REGIS MIAMI THE RESIDENCES

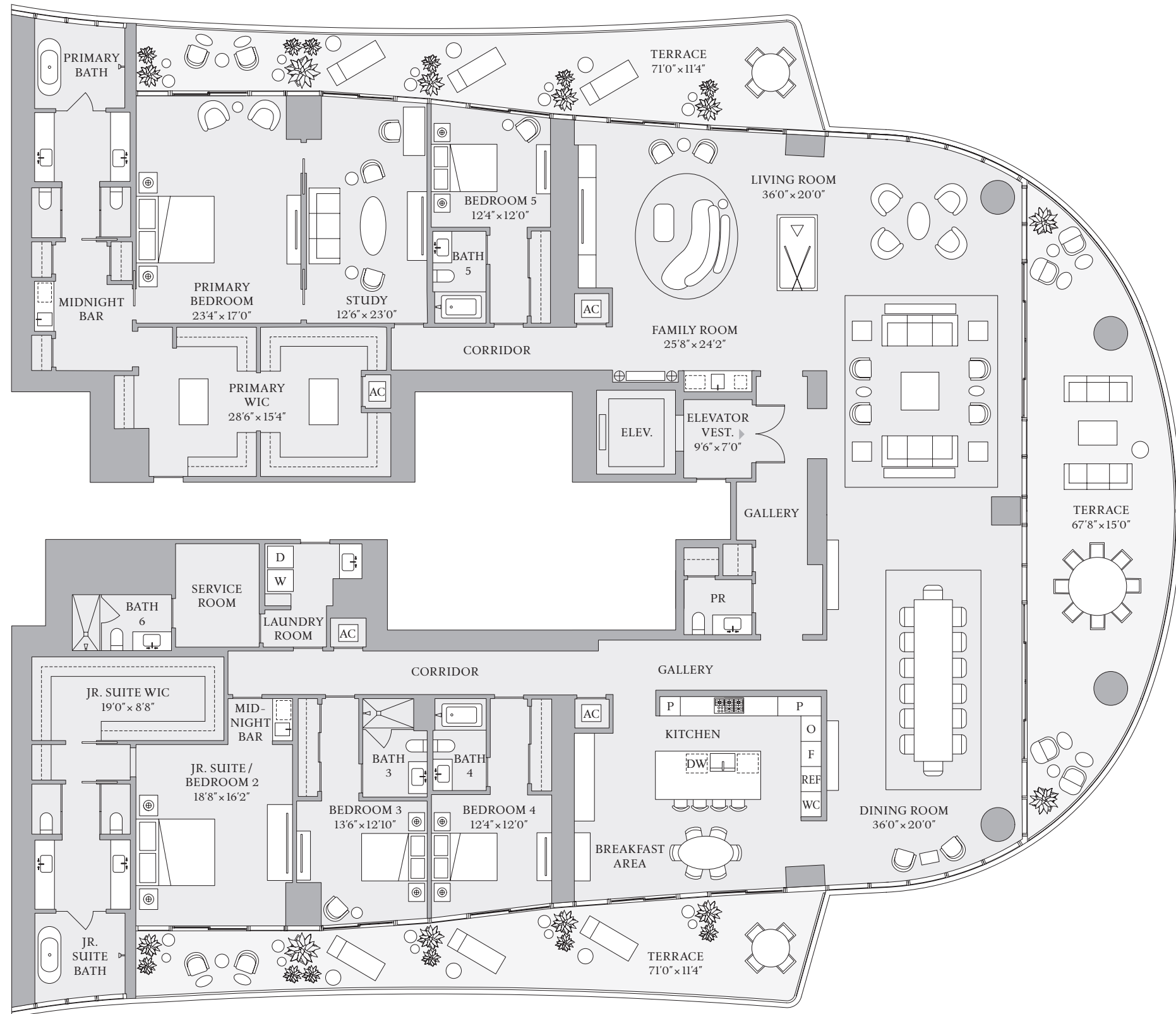
RESIDENCE

# AB

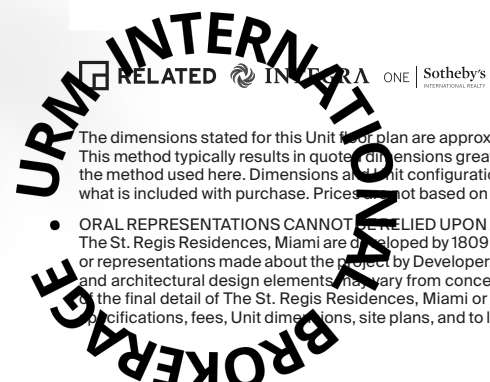
FLOORS 8-18

5 BEDROOMS  
6 BATHROOMS  
1 POWDER ROOM

INTERIOR  
7,391 SF | 686.6 SQM  
EXTERIOR  
1,882 SF | 174.8 SQM



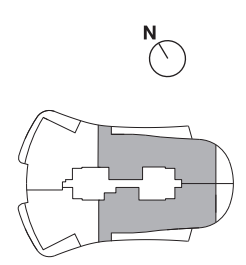
BISCAYNE BAY



The dimensions stated for this Unit and floor plan are approximate because there are various recognized methods for calculating the square footage of a Unit. The square footage stated here is calculated from the exterior boundaries of the exterior walls to the centerline of interior demising walls without deductions for cutouts, curves, or architectural features. This method typically results in quoted dimensions greater than the dimensions that would be determined by using other accepted methods. The definition of "Unit" and the calculation method to be relied upon is set forth in Developer's prospectus and the method set forth in the Developer's prospectus may result in a square footage calculation less than the method used here. Dimensions and Unit configuration may change during construction. The furniture illustrated is not included with purchase; the floorplan layout is not a guaranty on your use of space but is one example of uses of space. Consult the Developer's prospectus to understand the calculation of the Unit square footage and dimensions and what is included with purchase. Prices are not based on the square footage no matter the method of calculation of Unit dimensions and all prices are subject to change at any time.

ORAL REPRESENTATIONS CANNOT BE RELIED UPON AS CORRECTLY STATING REPRESENTATIONS OF THE DEVELOPER. FOR CORRECT REPRESENTATIONS, MAKE REFERENCE TO THIS BROCHURE AND TO THE DOCUMENTS REQUIRED BY SECTION 718.503, FLORIDA STATUTES, TO BE FURNISHED BY A DEVELOPER TO A BUYER OR LESSEE. The St. Regis Residences, Miami are developed by 1809 Brickell Property Owner, LLC ("Developer"). The St. Regis Residences, Miami are not owned, developed, or sold by Marriott International, Inc. or its affiliates ("Marriott"). The Developer uses the St. Regis marks under a license from Marriott, which has not confirmed the accuracy of any of the statements or representations made about the project by Developer. Sketches, renderings, or photographs depicting a floor plan are proposed only and the Developer reserves the right to modify, revise, or withdraw any or all of the same in Developer's sole discretion without prior notice. Locations and layouts of windows, doors, closets, plumbing fixtures, and structural and architectural design elements may vary from concept to actual construction. All depictions of appliances, plumbing fixtures, counters, countertops, cabinets, soffits, floor coverings, and other matters of design and décor detail or floor plans are conceptual and such drawings shown should not be relied upon as representations, express or implied, of the final detail of The St. Regis Residences, Miami or any Unit. There is no guarantee that any proposed hotel brands will be involved as depicted or at all upon, or following, the completion of The St. Regis Residences, Miami. Consult the prospectus of the Developer to understand this offering, the amenities, the proposed budgets, terms, conditions, specifications, fees, Unit dimensions, site plans, and to learn what is included with purchase and by payment of regular assessments. All prices are subject to change at any time and without notice and do not include optional features, design packages, furniture packages, or premiums for upgrades to any Unit. © 1809 Brickell Property Owner, LLC 2023.

BRICKELL AVE





# ST REGIS MIAMI THE RESIDENCES

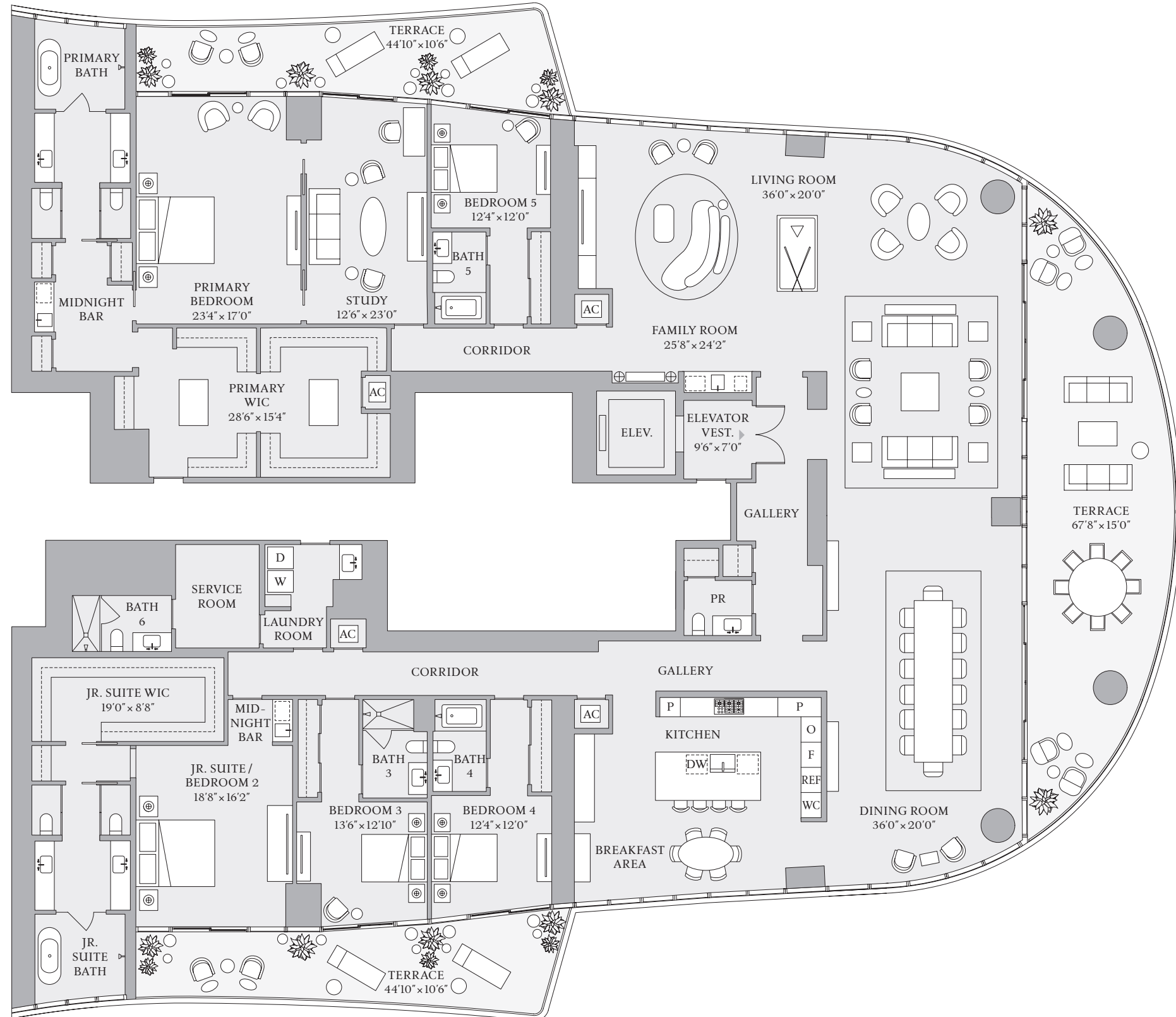
RESIDENCE

# AB

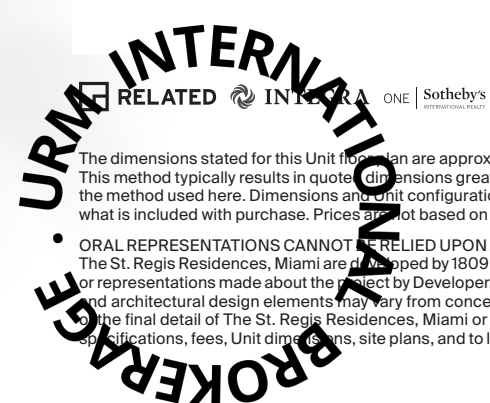
FLOORS 21-30, 33-41

5 BEDROOMS  
6 BATHROOMS  
1 POWDER ROOM

INTERIOR  
7,391 SF | 686.6 SQM  
EXTERIOR  
1,468 SF | 136.4 SQM



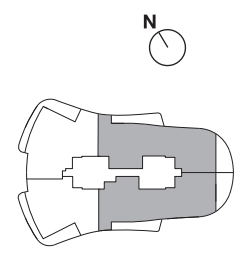
BISCAYNE BAY



The dimensions stated for this Unit floor plan are approximate because there are various recognized methods for calculating the square footage of a Unit. The square footage stated here is calculated from the exterior boundaries of the exterior walls to the centerline of interior demising walls without deductions for cutouts, curves, or architectural features. This method typically results in quoted dimensions greater than the dimensions that would be determined by using other accepted methods. The definition of "Unit" and the calculation method to be relied upon is set forth in Developer's prospectus and the method set forth in the Developer's prospectus may result in a square footage calculation less than the method used here. Dimensions and Unit configuration may change during construction. The furniture illustrated is not included with purchase; the floorplan layout is not a guaranty on your use of space but is one example of uses of space. Consult the Developer's prospectus to understand the calculation of the Unit square footage and dimensions and what is included with purchase. Prices are not based on the square footage no matter the method of calculation of Unit dimensions and all prices are subject to change at any time.

ORAL REPRESENTATIONS CANNOT BE RELIED UPON AS CORRECTLY STATING REPRESENTATIONS OF THE DEVELOPER. FOR CORRECT REPRESENTATIONS, MAKE REFERENCE TO THIS BROCHURE AND TO THE DOCUMENTS REQUIRED BY SECTION 718.503, FLORIDA STATUTES, TO BE FURNISHED BY A DEVELOPER TO A BUYER OR LESSEE. The St. Regis Residences, Miami are developed by 1809 Brickell Property Owner, LLC ("Developer"). The St. Regis Residences, Miami are not owned, developed, or sold by Marriott International, Inc. or its affiliates ("Marriott"). The Developer uses the St. Regis marks under a license from Marriott, which has not confirmed the accuracy of any of the statements or representations made about the project by Developer. Sketches, renderings, or photographs depicting a floor plan are proposed only and the Developer reserves the right to modify, revise, or withdraw any or all of the same in Developer's sole discretion without prior notice. Locations and layouts of windows, doors, closets, plumbing fixtures, and structural and architectural design elements may vary from concept to actual construction. All depictions of appliances, plumbing fixtures, counters, countertops, cabinets, soffits, floor coverings, and other matters of design and décor detail or floor plans are conceptual and such drawings shown should not be relied upon as representations, express or implied, of the final detail of The St. Regis Residences, Miami or any Unit. There is no guarantee that any proposed hotel brands will be involved as depicted or at all upon, or following, the completion of The St. Regis Residences, Miami. Consult the prospectus of the Developer to understand this offering, the amenities, the proposed budgets, terms, conditions, specifications, fees, Unit dimensions, site plans, and to learn what is included with purchase and by payment of regular assessments. All prices are subject to change at any time and without notice and do not include optional features, design packages, furniture packages, or premiums for upgrades to any Unit. © 1809 Brickell Property Owner, LLC 2023.

BRICKELL AVE





# ST REGIS MIAMI THE RESIDENCES

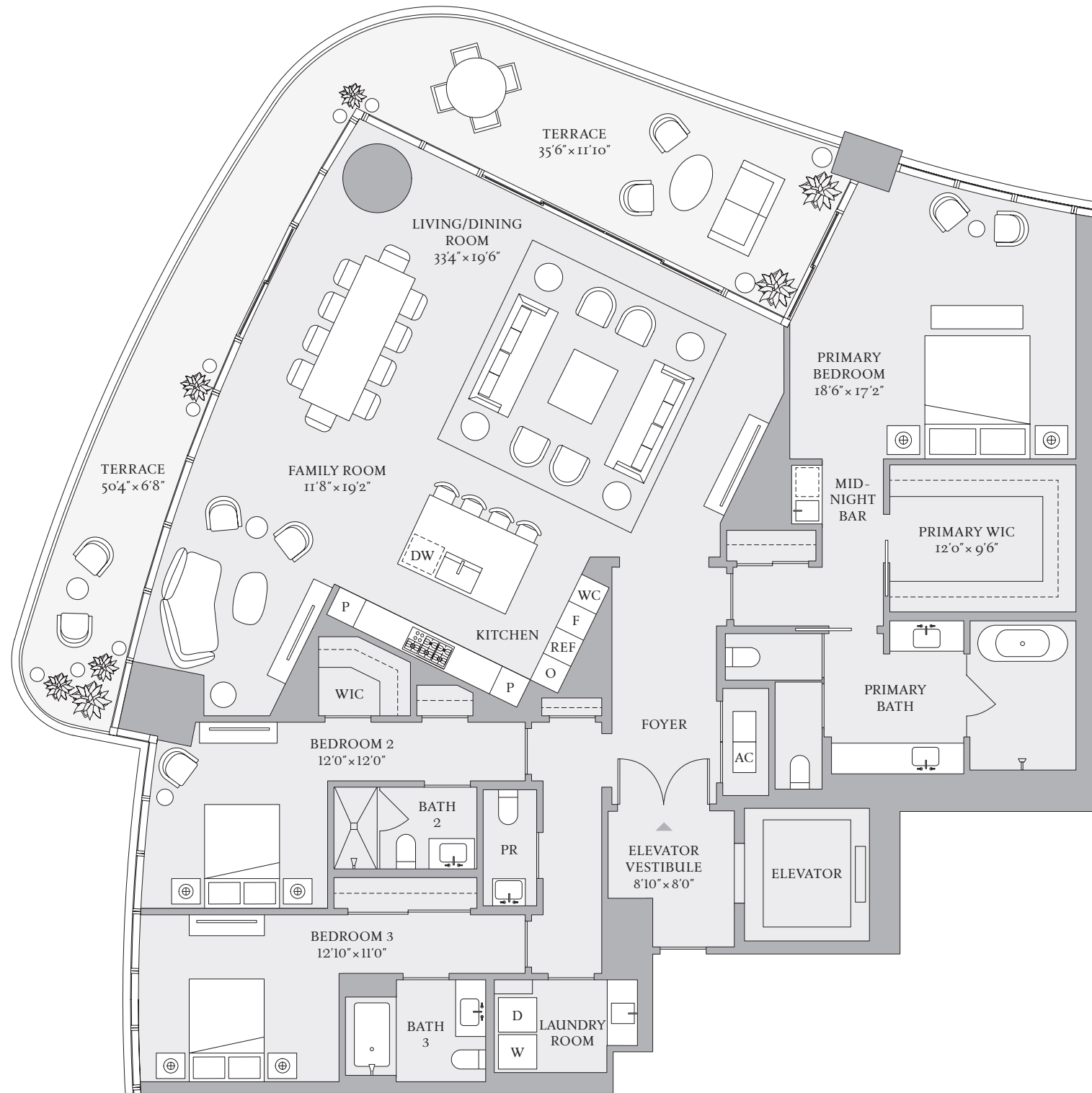
RESIDENCE

# C

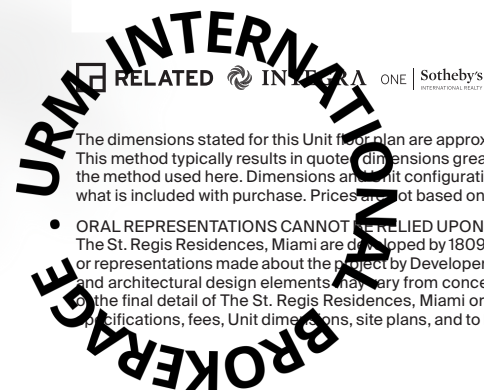
FLOORS 8-18, 21-30, 33-41

3 BEDROOMS  
3 BATHROOMS  
1 POWDER ROOM

INTERIOR  
2,987 SF | 277.5 SQM  
EXTERIOR  
590 SF | 54.8 SQM



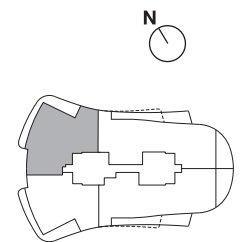
BISCAYNE BAY



The dimensions stated for this Unit floor plan are approximate because there are various recognized methods for calculating the square footage of a Unit. The square footage stated here is calculated from the exterior boundaries of the exterior walls to the centerline of interior demising walls without deductions for cutouts, curves, or architectural features. This method typically results in quoted dimensions greater than the dimensions that would be determined by using other accepted methods. The definition of "Unit" and the calculation method to be relied upon is set forth in Developer's prospectus and the method set forth in the Developer's prospectus may result in a square footage calculation less than the method used here. Dimensions and Unit configuration may change during construction. The furniture illustrated is not included with purchase; the floorplan layout is not a guaranty on your use of space but is one example of uses of space. Consult the Developer's prospectus to understand the calculation of the Unit square footage and dimensions and what is included with purchase. Prices are not based on the square footage no matter the method of calculation of Unit dimensions and all prices are subject to change at any time.

ORAL REPRESENTATIONS CANNOT BE RELIED UPON AS CORRECTLY STATING REPRESENTATIONS OF THE DEVELOPER. FOR CORRECT REPRESENTATIONS, MAKE REFERENCE TO THIS BROCHURE AND TO THE DOCUMENTS REQUIRED BY SECTION 718.503, FLORIDA STATUTES, TO BE FURNISHED BY A DEVELOPER TO A BUYER OR LESSEE. The St. Regis Residences, Miami are developed by 1809 Brickell Property Owner, LLC ("Developer"). The St. Regis Residences, Miami are not owned, developed, or sold by Marriott International, Inc. or its affiliates ("Marriott"). The Developer uses the St. Regis marks under a license from Marriott, which has not confirmed the accuracy of any of the statements or representations made about the project by Developer. Sketches, renderings, or photographs depicting a floor plan are proposed only and the Developer reserves the right to modify, revise, or withdraw any or all of the same in Developer's sole discretion without prior notice. Locations and layouts of windows, doors, closets, plumbing fixtures, and structural and architectural design elements may vary from concept to actual construction. All depictions of appliances, plumbing fixtures, counters, countertops, cabinets, soffits, floor coverings, and other matters of design and décor detail or floor plans are conceptual and such drawings shown should not be relied upon as representations, express or implied, of the final detail of The St. Regis Residences, Miami or any Unit. There is no guarantee that any proposed hotel brands will be involved as depicted or at all upon, or following, the completion of The St. Regis Residences, Miami. Consult the prospectus of the Developer to understand this offering, the amenities, the proposed budgets, terms, conditions, specifications, fees, Unit dimensions, site plans, and to learn what is included with purchase and by payment of regular assessments. All prices are subject to change at any time and without notice and do not include optional features, design packages, furniture packages, or premiums for upgrades to any Unit. © 1809 Brickell Property Owner, LLC 2023.

BRICKELL AVE





# ST REGIS MIAMI THE RESIDENCES

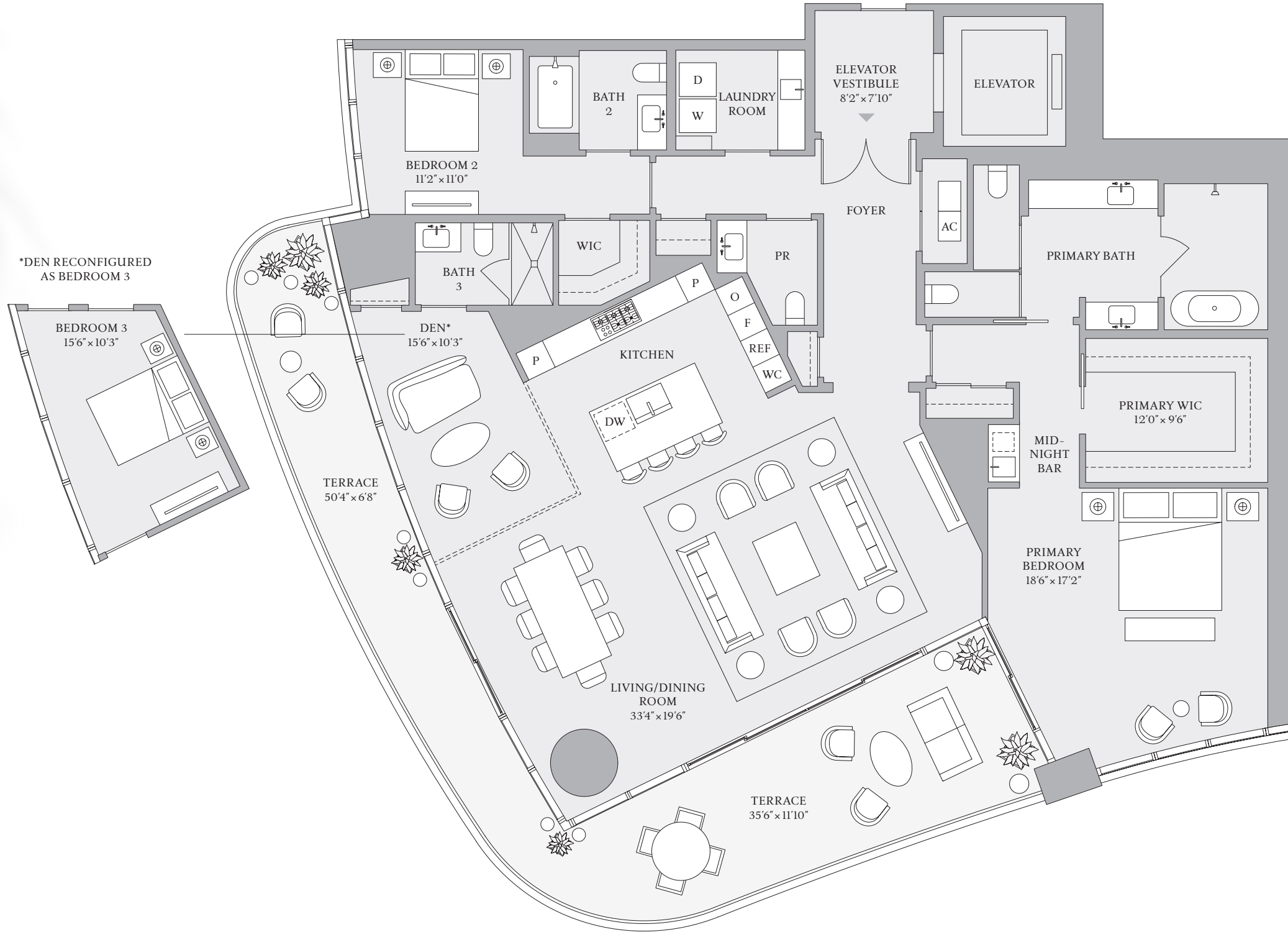
RESIDENCE

# D

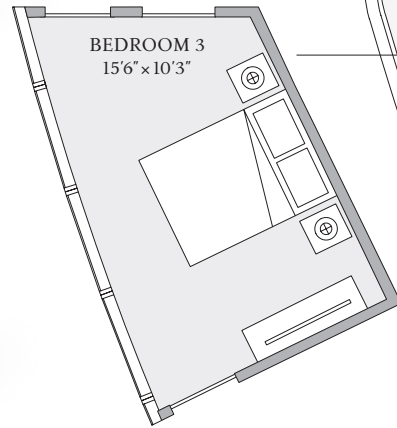
FLOORS 8-18, 21-30, 33-41

- 2 BEDROOMS
- 3 BATHROOMS
- 1 POWDER ROOM

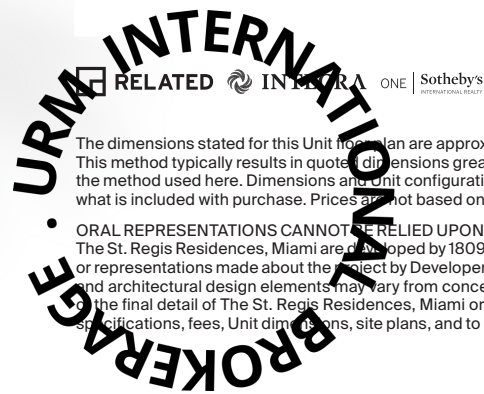
INTERIOR  
2,616 SF | 243 SQM  
EXTERIOR  
590 SF | 54.8 SQM



\*DEN RECONFIGURED AS BEDROOM 3



BISCAYNE BAY



The dimensions stated for this Unit floor plan are approximate because there are various recognized methods for calculating the square footage of a Unit. The square footage stated here is calculated from the exterior boundaries of the exterior walls to the centerline of interior demising walls without deductions for cutouts, curves, or architectural features. This method typically results in quoted dimensions greater than the dimensions that would be determined by using other accepted methods. The definition of "Unit" and the calculation method to be relied upon is set forth in Developer's prospectus and the method set forth in the Developer's prospectus may result in a square footage calculation less than the method used here. Dimensions and Unit configuration may change during construction. The furniture illustrated is not included with purchase; the floorplan layout is not a guaranty on your use of space but is one example of uses of space. Consult the Developer's prospectus to understand the calculation of the Unit square footage and dimensions and what is included with purchase. Prices are not based on the square footage no matter the method of calculation of Unit dimensions and all prices are subject to change at any time.

ORAL REPRESENTATIONS CANNOT BE RELIED UPON AS CORRECTLY STATING REPRESENTATIONS OF THE DEVELOPER. FOR CORRECT REPRESENTATIONS, MAKE REFERENCE TO THIS BROCHURE AND TO THE DOCUMENTS REQUIRED BY SECTION 718.503, FLORIDA STATUTES, TO BE FURNISHED BY A DEVELOPER TO A BUYER OR LESSEE. The St. Regis Residences, Miami are developed by 1809 Brickell Property Owner, LLC ("Developer"). The St. Regis Residences, Miami are not owned, developed, or sold by Marriott International, Inc. or its affiliates ("Marriott"). The Developer uses the St. Regis marks under a license from Marriott, which has not confirmed the accuracy of any of the statements or representations made about the project by Developer. Sketches, renderings, or photographs depicting a floor plan are proposed only and the Developer reserves the right to modify, revise, or withdraw any or all of the same in Developer's sole discretion without prior notice. Locations and layouts of windows, doors, closets, plumbing fixtures, and structural and architectural design elements may vary from concept to actual construction. All depictions of appliances, plumbing fixtures, counters, countertops, cabinets, soffits, floor coverings, and other matters of design and décor detail or floor plans are conceptual and such drawings shown should not be relied upon as representations, express or implied. The final detail of The St. Regis Residences, Miami or any Unit. There is no guarantee that any proposed hotel brands will be involved as depicted or at all upon, or following, the completion of The St. Regis Residences, Miami. Consult the prospectus of the Developer to understand this offering, the amenities, the proposed budgets, terms, conditions, specifications, fees, Unit dimensions, site plans, and to learn what is included with purchase and by payment of regular assessments. All prices are subject to change at any time and without notice and do not include optional features, design packages, furniture packages, or premiums for upgrades to any Unit. © 1809 Brickell Property Owner, LLC 2023.

BRICKELL AVE

