



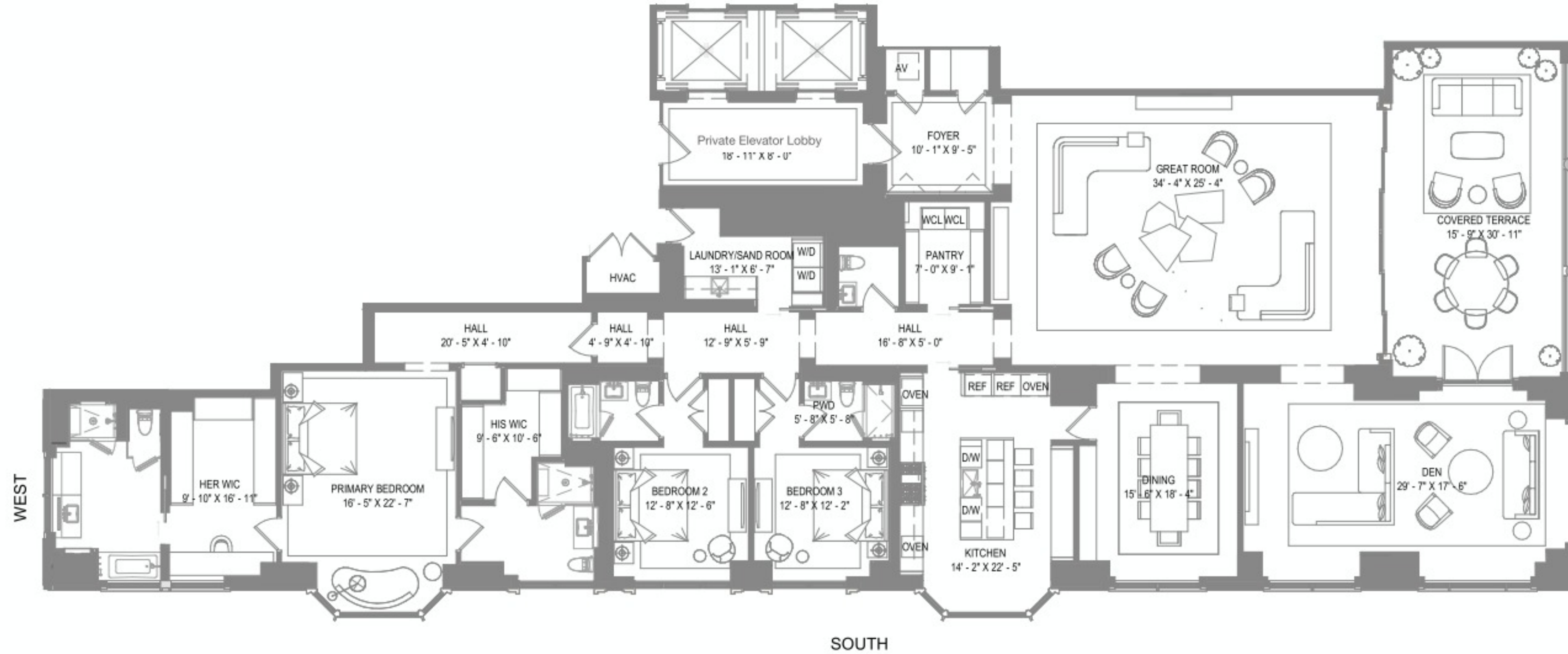
PARK & LAKE TOWER

Typical Tier 1 South Residence Floors 6-9

- 3 BEDROOMS
- 4 BATHROOMS
- 1 POWDER ROOM

INTERIOR AREA: 5,034 SQ. FT.
EXTERIOR AREA: 551 SQ. FT.

DRAFT FLOOR PLAN



INTRACOASTAL / OCEAN

Please note: This marketing floor plan has not been finalized and is subject to minor changes.



TEL: 561.867.9580 INFO@SOUTHFLAGLERHOUSE.COM WWW.SOUTHFLAGLERHOUSE.COM

EXCLUSIVE SALES BY SUZANNE FRISBIE OF FRISBIE PALM BEACH WITH CORCORAN SUNSHINE MARKETING GROUP



Equal Housing Opportunity. There are various methods for calculating the square footage of a Unit and depending on the method of calculation, the quoted square footage of a Unit in advertising materials may vary from the square footage of a Unit as stated or described in the Prospectus and the Declaration. The dimensions of the Unit set forth on the previous page have been calculated from the exterior boundaries of the exterior walls, without reduction for common elements such as structural walls and other interior structural components of the building. As such, the area set forth on the previous page will be larger than the area calculated in the manner provided in the Declaration. For the area of the Unit calculated in accordance with the technical definition of the Unit, see Exhibit "3" to the Declaration. All depictions of appliances, fixtures, furnishings, counters, soffits, and other matters of detail, including, without limitation, items of finish and decoration, are conceptual only and are not necessarily included in each Unit. All dimensions are approximate and may vary with actual construction. All floor plans are subject to change. Note that measurements of rooms set forth on this floor plan are generally taken at the greatest points of each given room (as if the room were a perfect rectangle), without regard for any cutouts. Accordingly, the area of the actual room will typically be smaller than the product obtained by multiplying the stated length times width. Consult the Developer's Prospectus for information regarding what is offered with the Unit and for the calculation of the Unit square footage, dimensions, and floor area. This Condominium is being developed by Flagler Towers Project DEV LLC, ("Developer"). Any and all statements, disclosures and/or representations shall be deemed made by Developer and not by Hines or the Frisbie Group and any purchaser agrees to look solely to Developer (and not to Hines, the Frisbie Group and/or any of its or their affiliates) with respect to any and all matters relating to the marketing and/or development of the Condominium and with respect to the sales of units in the Condominium.

ORAL REPRESENTATIONS CANNOT BE RELIED UPON AS CORRECTLY STATING THE REPRESENTATIONS OF THE DEVELOPER. FOR CORRECT REPRESENTATIONS, MAKE REFERENCE TO THIS BROCHURE AND TO THE DOCUMENTS REQUIRED BY SECTION 718.503, FLORIDA STATUTES, TO BE FURNISHED BY A DEVELOPER TO A BUYER OR LESSEE.



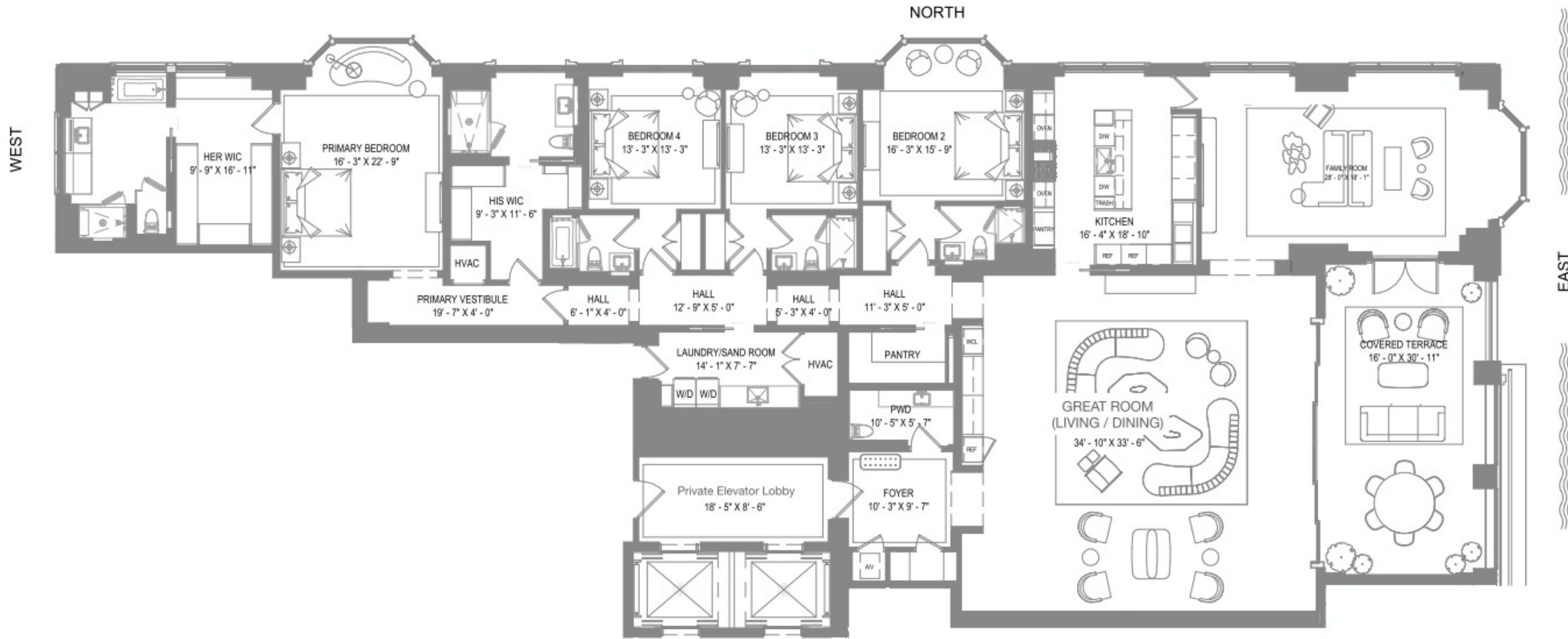
PARK & LAKE TOWER

Typical Tier 1 North Residence Floors 6-9

4 BEDROOMS
5 BATHROOMS
1 POWDER ROOM

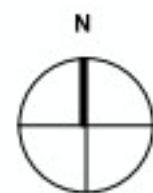
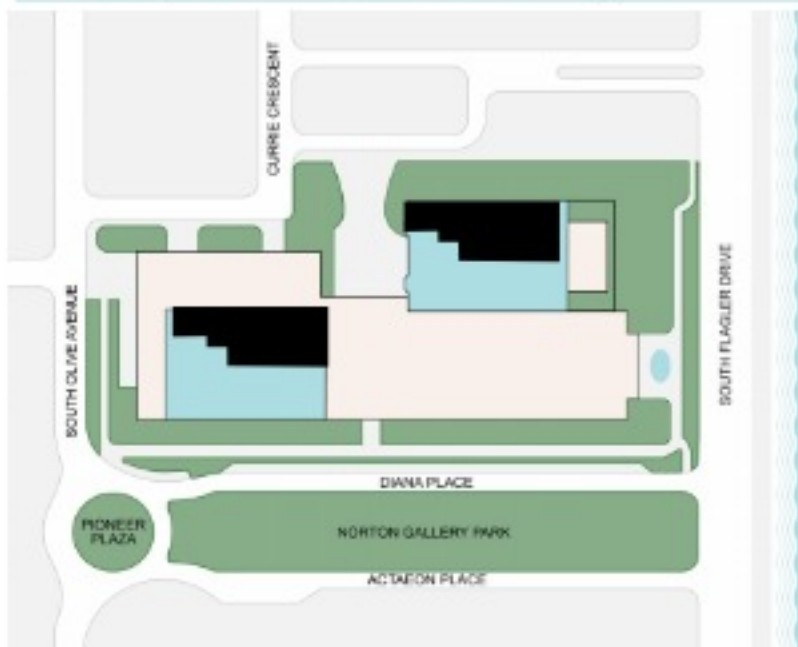
INTERIOR AREA: 5,385 SQ. FT.
EXTERIOR AREA: 551 SQ. FT.

DRAFT FLOOR PLAN



INTRACOASTAL / OCEAN

Please note: This marketing floor plan has not been finalized and is subject to minor changes.



TEL: 561.867.9580 INFO@SOUTHFLAGLERHOUSE.COM WWW.SOUTHFLAGLERHOUSE.COM

EXCLUSIVE SALES BY SUZANNE FRISBIE OF FRISBIE PALM BEACH WITH CORCORAN SUNSHINE MARKETING GROUP

Equal Housing Opportunity. There are various methods for calculating the square footage of a Unit and depending on the method of calculation, the quoted square footage of a Unit in advertising materials may vary from the square footage of a Unit as stated or described in the Prospectus and the Declaration. The dimensions of the Unit set forth on the previous page have been calculated from the exterior boundaries of the exterior walls to the centerline of shared walls, without reduction for common elements such as structural walls and other interior structural components of the building. As such, the area set forth on the previous page will be larger than the area calculated in the manner provided in the Declaration. For the area of the Unit calculated in accordance with the technical definition of the Unit, see Exhibit "3" to the Declaration. All depictions of appliances, fixtures, furnishings, counters, soffits, and other matters of detail, including, without limitation, items of finish and decoration, are conceptual only and are not necessarily included in each Unit. All dimensions are approximate and may vary with actual construction. All floor plans are subject to change. Note that measurements of rooms set forth on this floor plan are generally taken at the greatest points of each given room (as if the room were a perfect rectangle), without regard for any cutouts. Accordingly, the area of the actual room will typically be smaller than the product obtained by multiplying the stated length times width. Consult the Developer's Prospectus for Information regarding what is offered with the Unit and for the calculation of the Unit square footage, dimensions, and floor area. This Condominium is being developed by Flagler Towers Project DEV LLC, ("Developer"). Any and all statements, disclosures and/or representations shall be deemed made by Developer and not by Hines or the Frisbie Group and any purchaser agrees to look solely to Developer (and not to Hines, the Frisbie Group and/or any of its or their affiliates) with respect to any and all matters relating to the marketing and/or development of the Condominium and with respect to the sales of units in the Condominium.

ORAL REPRESENTATIONS CANNOT BE RELIED UPON AS CORRECTLY STATING THE REPRESENTATIONS OF THE DEVELOPER. FOR CORRECT REPRESENTATIONS, MAKE REFERENCE TO THIS BROCHURE AND TO THE DOCUMENTS REQUIRED BY SECTION 718.503, FLORIDA STATUTES, TO BE FURNISHED BY A DEVELOPER TO A BUYER OR LESSEE.



DRAFT FLOOR PLAN



PARK ONLY

Typical Tier 1 West Residence Floors 7 & 8

2 BEDROOMS
2 BATHROOMS
1 POWDER ROOM

INTERIOR AREA: 2,196 SQ. FT.
EXTERIOR AREA: 340 SQ. FT.

DUAL KEYED ELEVATORS

FOYER

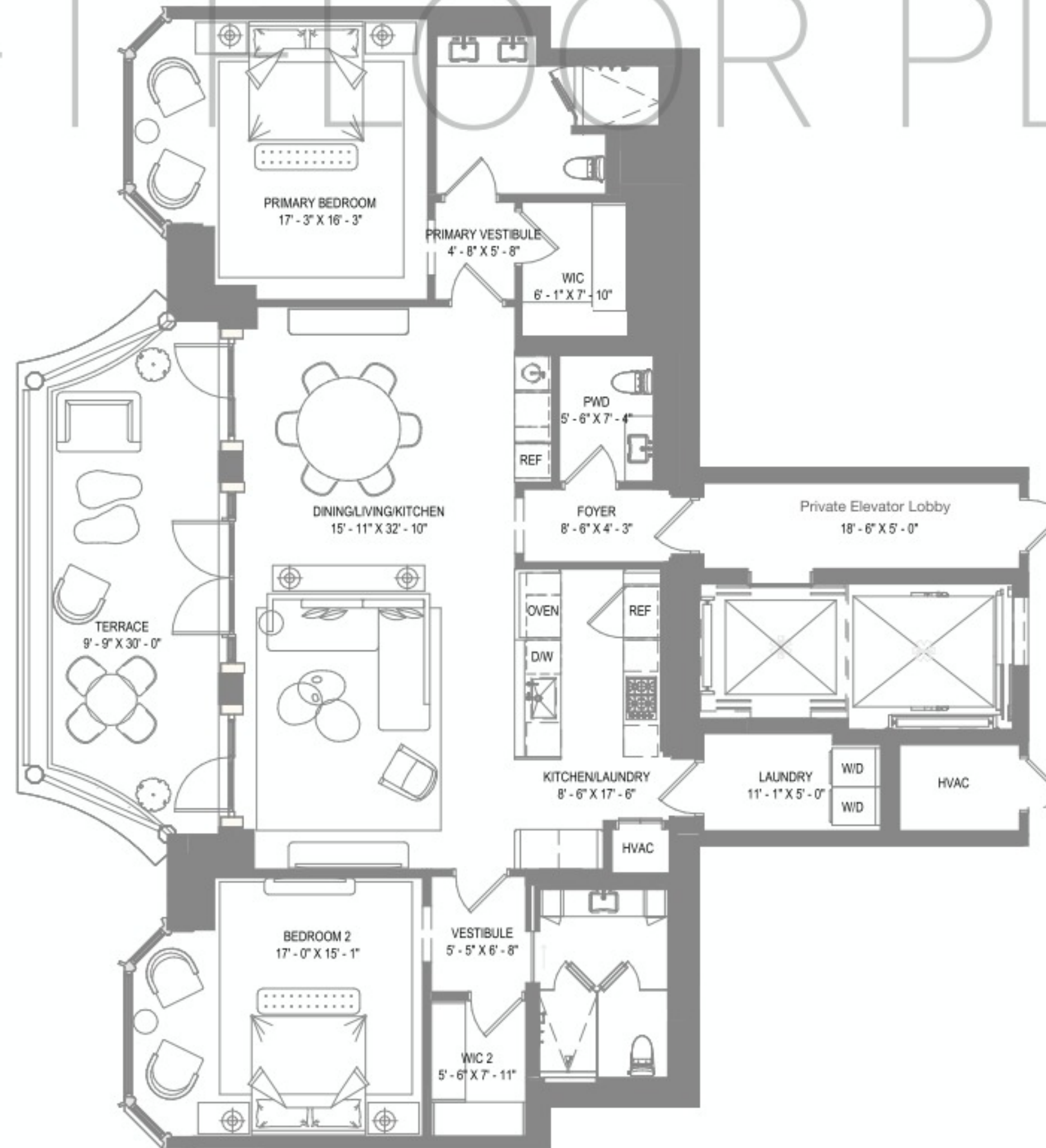
SEPERATE SERVICE ENTRY

COVERED TERRACE

EXPANSIVE LIVING ROOM WITH KITCHEN
AND DINING AREA

PRIMARY BEDROOM SUITE WITH
WALK-IN CLOSET AND
BATHROOM

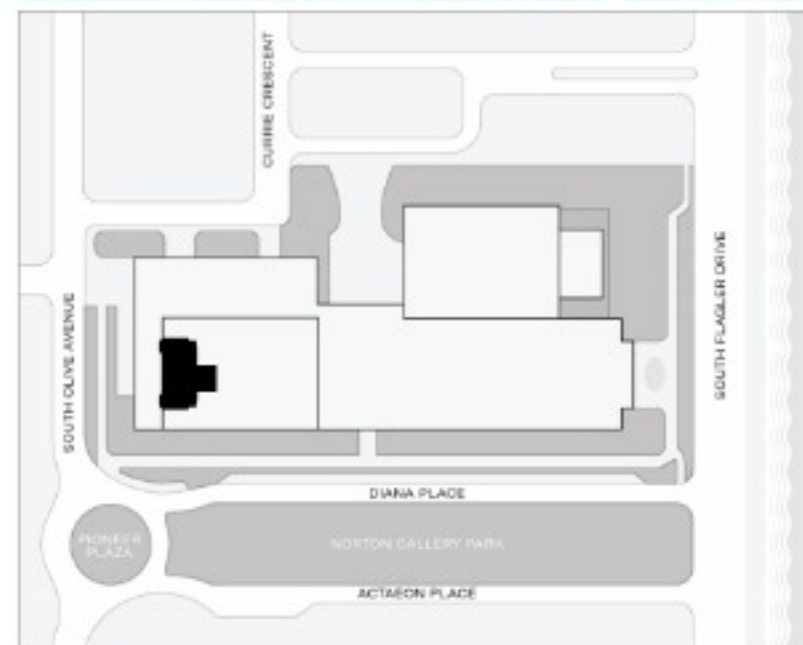
LAUNDRY



WEST

INTRACOASTAL / OCEAN

Please note: This marketing floor plan has not been finalized and is subject to minor changes.



TEL: 561.867.9580 INFO@SOUTHFLAGLERHOUSE.COM WWW.SOUTHFLAGLERHOUSE.COM

EXCLUSIVE SALES BY SUZANNE FRISBIE OF FRISBIE PALM BEACH WITH CORCORAN SUNSHINE MARKETING GROUP

Equal Housing Opportunity. There are various methods for calculating the square footage of a Unit and depending on the method of calculation, the quoted square footage of a Unit in advertising materials may vary from the square footage of a Unit as stated or described in the Prospectus and the Declaration. The dimensions of the Unit set forth on the previous page have been calculated from the exterior boundaries of the exterior walls to the centerline of shared walls, without reduction for common elements such as structural walls and other interior structural components of the building. As such, the area set forth on the previous page will be larger than the area calculated in the manner provided in the Declaration. For the area of the Unit calculated in accordance with the technical definition of the Unit, see Exhibit "3" to the Declaration. All depictions of appliances, fixtures, furnishings, counters, soffits, and other matters of detail, including, without limitation, items of finish and decoration, are conceptual only and are not necessarily included in each Unit. All dimensions are approximate and may vary with actual construction. All floor plans are subject to change. Note that measurements of rooms set forth on this floor plan are generally taken at the greatest points of each given room (as if the room were a perfect rectangle), without regard for any cutouts. Accordingly, the area of the actual room will typically be smaller than the product obtained by multiplying the stated length times width. Consult the Developer's Prospectus for information regarding what is offered with the Unit and for the calculation of the Unit square footage, dimensions, and floor area. This Condominium is being developed by Flagler Towers Project DEV LLC, ("Developer"). Any and all statements, disclosures and/or representations shall be deemed made by Developer and not by Hines or the Frisbie Group and any purchaser agrees to look solely to Developer (and not to Hines, the Frisbie Group and/or any of its or their affiliates) with respect to any and all matters relating to the marketing and/or development of the Condominium and with respect to the sales of units in the Condominium.



ORAL REPRESENTATIONS CANNOT BE RELIED UPON AS CORRECTLY STATING THE REPRESENTATIONS OF THE DEVELOPER. FOR CORRECT REPRESENTATIONS, MAKE REFERENCE TO THIS BROCHURE AND TO THE DOCUMENTS REQUIRED BY SECTION 718.503, FLORIDA STATUTES, TO BE FURNISHED BY A DEVELOPER TO A BUYER OR LESSEE.

DRAFT FLOOR PLAN



LAKE ONLY

Typical Tier 2 South Residence Floors 12-18

5 BEDROOMS
6 BATHROOMS
1 POWDER ROOM

INTERIOR AREA: 6494 SQ. FT.
EXTERIOR AREA: 765 SQ. FT.



INTRACOASTAL / OCEAN

Please note: This marketing floor plan has not been finalized and is subject to minor changes.



TEL: 561.867.9580 INFO@SOUTHFLAGLERHOUSE.COM WWW.SOUTHFLAGLERHOUSE.COM

EXCLUSIVE SALES BY SUZANNE FRISBIE OF FRISBIE PALM BEACH WITH CORCORAN SUNSHINE MARKETING GROUP

Equal Housing Opportunity. There are various methods for calculating the square footage of a Unit and depending on the method of calculation, the quoted square footage of a Unit in advertising materials may vary from the square footage of a Unit as stated or described in the Prospectus and the Declaration. The dimensions of the Unit set forth on the previous page have been calculated from the exterior boundaries of the exterior walls to the centerline of shared walls, without reduction for common elements such as structural walls and other interior structural components of the building. As such, the area set forth on the previous page will be larger than the area calculated in the manner provided in the Declaration. For the area of the Unit calculated in accordance with the technical definition of the Unit, see Exhibit "3" to the Declaration. All depictions of appliances, fixtures, furnishings, counters, soffits, and other matters of detail, including, without limitation, items of finish and decoration, are conceptual only and are not necessarily included in each Unit. All dimensions are approximate and may vary with actual construction. All floor plans are subject to change. Note that measurements of rooms set forth on this floor plan are generally taken at the greatest points of each given room (as if the room were a perfect rectangle), without regard for any cutouts. Accordingly, the area of the actual room will typically be smaller than the product obtained by multiplying the stated length times width. Consult the Developer's Prospectus for Information regarding what is offered with the Unit and for the calculation of the Unit square footage, dimensions, and floor area. This Condominium is being developed by Flagler Towers Project DEV LLC. ("Developer"). Any and all statements, disclosures and/or representations shall be deemed made by Developer and not by Hines, the Frisbie Group and any purchaser agrees to look solely to Developer (and not to Hines, the Frisbie Group and/or any of its or their affiliates) with respect to any and all matters relating to the marketing and/or development of the Condominium and with respect to the sales of units in the Condominium.

ORAL REPRESENTATIONS CANNOT BE RELIED UPON AS CORRECTLY STATING THE REPRESENTATIONS OF THE DEVELOPER. FOR CORRECT REPRESENTATIONS, MAKE REFERENCE TO THIS BROCHURE AND TO THE DOCUMENTS REQUIRED BY SECTION 718.503, FLORIDA STATUTES, TO BE FURNISHED BY A DEVELOPER TO A BUYER OR LESSEE.

RELATED



PARK ONLY

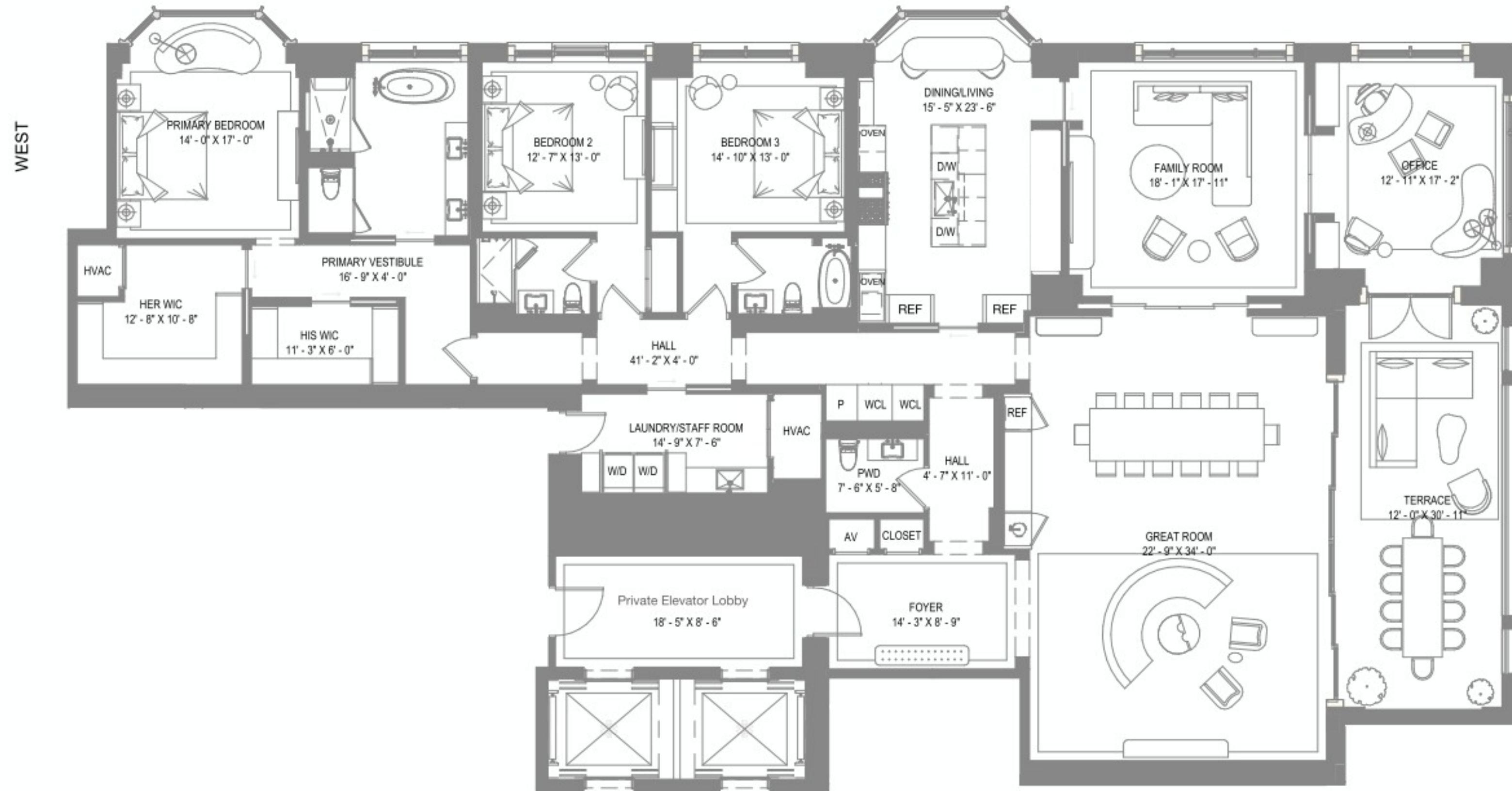
Typical Tier 2 North Residence Floors 12-18

3 BEDROOMS
3 BATHROOMS
1 POWDER ROOM

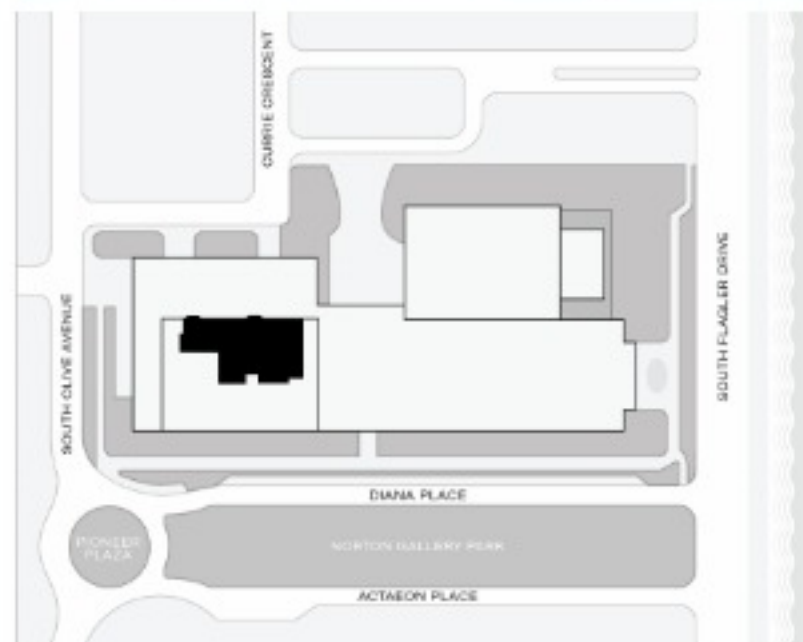
INTERIOR AREA: 4,371 SQ. FT.
EXTERIOR AREA: 425 SQ. FT.

- DUAL KEYED ELEVATORS
- SEPARATE SERVICE ENTRY
- FOYER
- COVERED TERRACE
- EXPANSIVE GREAT ROOM WITH WET BAR
- WINDOWED EAT-IN KITCHEN
- OFFICE
- FAMILY ROOM
- PRIMARY BEDROOM SUITE WITH DUAL WALK-IN CLOSETS AND WINDOWED BATHROOM
- LAUNDRY / SAND ROOM

DRAFT FLOOR PLAN



Please note: This marketing floor plan has not been finalized and is subject to minor changes.



TEL: 561.867.9580 INFO@SOUTHFLAGLERHOUSE.COM WWW.SOUTHFLAGLERHOUSE.COM

EXCLUSIVE SALES BY SUZANNE FRISBIE OF FRISBIE PALM BEACH WITH CORCORAN SUNSHINE MARKETING GROUP

Equal Housing Opportunity. There are various methods for calculating the square footage of a Unit and depending on the method of calculation, the quoted square footage of a Unit in advertising materials may vary from the square footage of a Unit as stated or described in the Prospectus and the Declaration. The dimensions of the Unit set forth on the previous page have been calculated from the exterior boundaries of the exterior walls to the centerline of shared walls, without reduction for common elements such as structural walls and other interior structural components of the building. As such, the area set forth on the previous page will be larger than the area calculated in the manner provided in the Declaration. For the area of the Unit calculated in accordance with the technical definition of the Unit, see Exhibit "3" to the Declaration. All depictions of appliances, fixtures, furnishings, counters, soffits, and other matters of detail, including, without limitation, items of finish and decoration, are conceptual only and are not necessarily included in each Unit. All dimensions are approximate and may vary with actual construction. All floor plans are subject to change. Note that measurements of rooms set forth on this floor plan are generally taken at the greatest points of each given room (as if the room were a perfect rectangle), without regard for any cutouts. Accordingly, the area of the actual room will typically be smaller than the product obtained by multiplying the stated length times width. Consult the Developer's Prospectus for information regarding what is offered with the Unit and for the calculation of the Unit square footage, dimensions, and floor area. This Condominium is being developed by Flagler Towers Project DEV LLC, ("Developer"). Any and all statements, disclosures and/or representations shall be deemed made by Developer and not by Hines or the Frisbie Group and any purchaser agrees to look solely to Developer (and not to Hines, the Frisbie Group and/or any of its or their affiliates) with respect to any and all matters relating to the marketing and/or development of the Condominium and with respect to the sales of units in the Condominium.

**ORAL REPRESENTATIONS CANNOT BE RELIED UPON AS CORRECTLY STATING THE REPRESENTATIONS OF THE DEVELOPER.
FOR CORRECT REPRESENTATIONS, MAKE REFERENCE TO THIS BROCHURE AND TO THE DOCUMENTS REQUIRED BY SECTION 718.503, FLORIDA STATUTES, TO BE FURNISHED BY A DEVELOPER TO A BUYER OR LESSEE.**

RELATED

DRAFT FLOOR PLAN

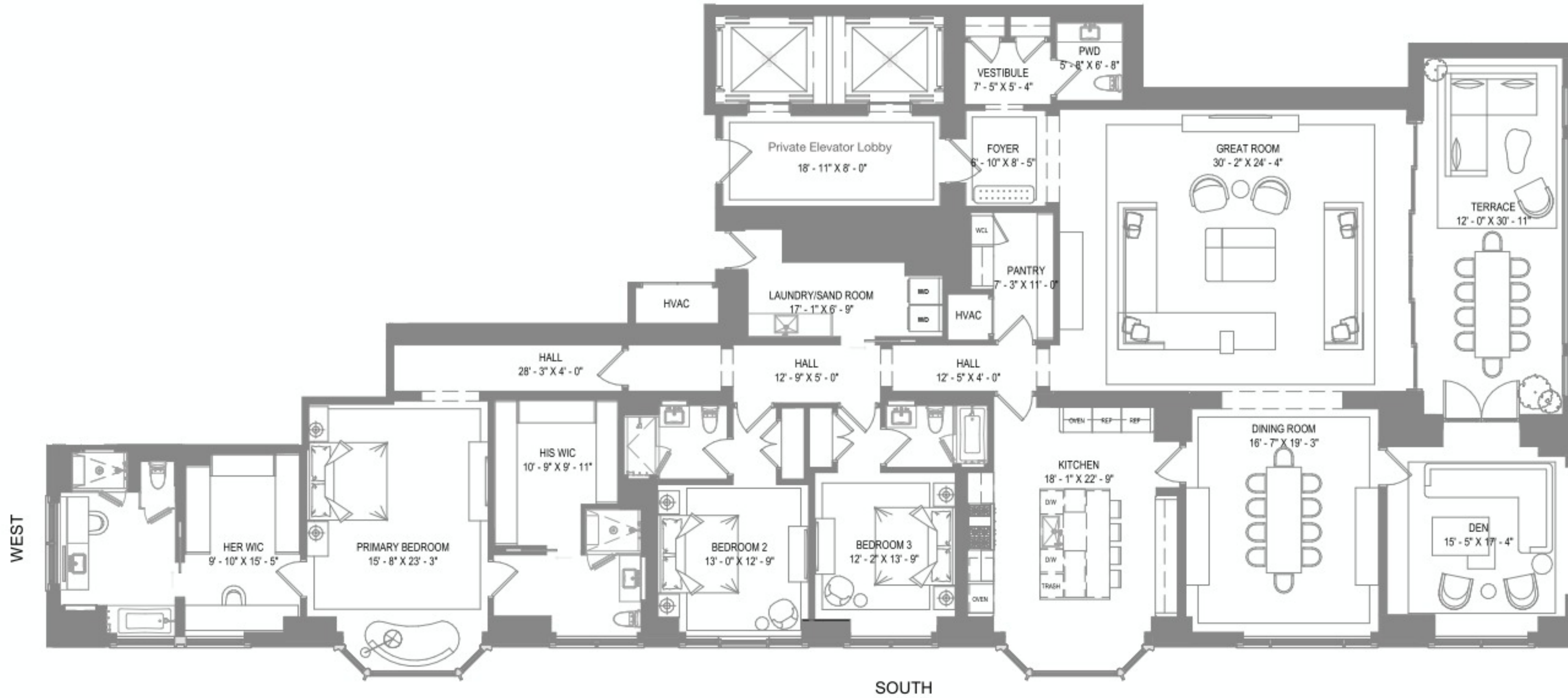


PARK ONLY

Typical Tier 2 South Residence Floors 12-18

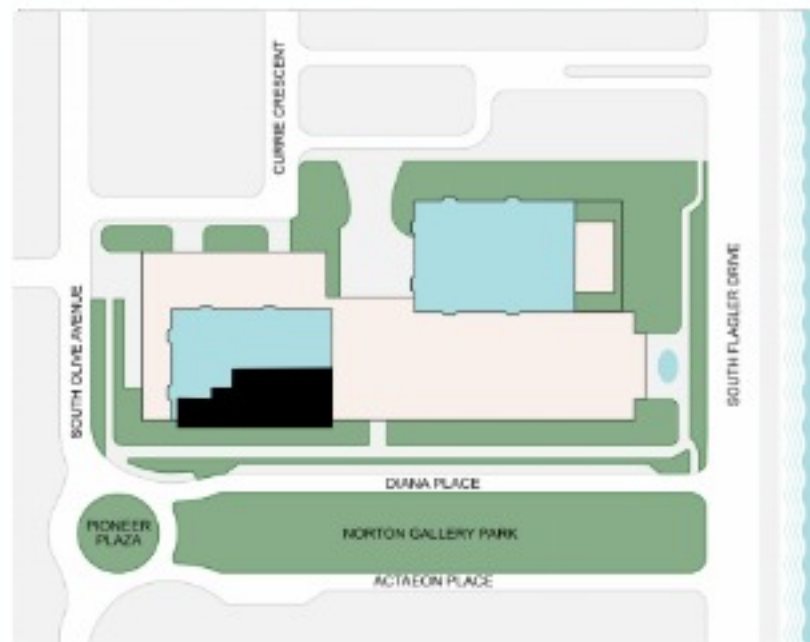
3 BEDROOMS
4 BATHROOMS
1 POWDER ROOM

INTERIOR AREA: 4,631 SQ. FT.
EXTERIOR AREA: 425 SQ. FT.



INTRACOASTAL / OCEAN

Please note: This marketing floor plan has not been finalized and is subject to minor changes.



TEL: 561.867.9580 INFO@SOUTHFLAGLERHOUSE.COM WWW.SOUTHFLAGLERHOUSE.COM

EXCLUSIVE SALES BY SUZANNE FRISBIE OF FRISBIE PALM BEACH WITH CORCORAN SUNSHINE MARKETING GROUP

Equal Housing Opportunity. There are various methods for calculating the square footage of a Unit and depending on the method of calculation, the quoted square footage of a Unit in advertising materials may vary from the square footage of a Unit as stated or described in the Prospectus and the Declaration. The dimensions of the Unit set forth on the previous page have been calculated from the exterior boundaries of the exterior walls to the centerline of shared walls, without reduction for common elements such as structural walls and other interior structural components of the building. As such, the area set forth on the previous page will be larger than the area calculated in the manner provided in each Unit. All dimensions are approximate and may vary with actual construction. All floor plans are subject to change. Note that measurements of rooms set forth on this floor plan are generally taken at the greatest points of each given room (as if the room were a perfect rectangle), without regard for any cutouts. Accordingly, the area of the actual room will typically be smaller than the product obtained by multiplying the stated length times width. Consult the Developer's Prospectus for information regarding what is offered with the Unit and for the calculation of the Unit square footage, dimensions, and floor area. This Condominium is being developed by Flagler Towers Project DEV LLC, ("Developer"). Any and all statements, disclosures and/or representations shall be deemed made by Developer and not by Hines or the Frisbie Group and any purchaser agrees to look solely to Developer (and not to Hines, the Frisbie Group and/or any of its or their affiliates) with respect to any and all matters relating to the marketing and/or development of the Condominium and with respect to the sales of units in the Condominium.

**ORAL REPRESENTATIONS CANNOT BE RELIED UPON AS CORRECTLY STATING THE REPRESENTATIONS OF THE DEVELOPER.
FOR CORRECT REPRESENTATIONS, MAKE REFERENCE TO THIS BROCHURE AND TO THE DOCUMENTS REQUIRED BY SECTION 718.503, FLORIDA STATUTES, TO BE FURNISHED BY A DEVELOPER TO A BUYER OR LESSEE.**



DRAFT FLOOR PLAN



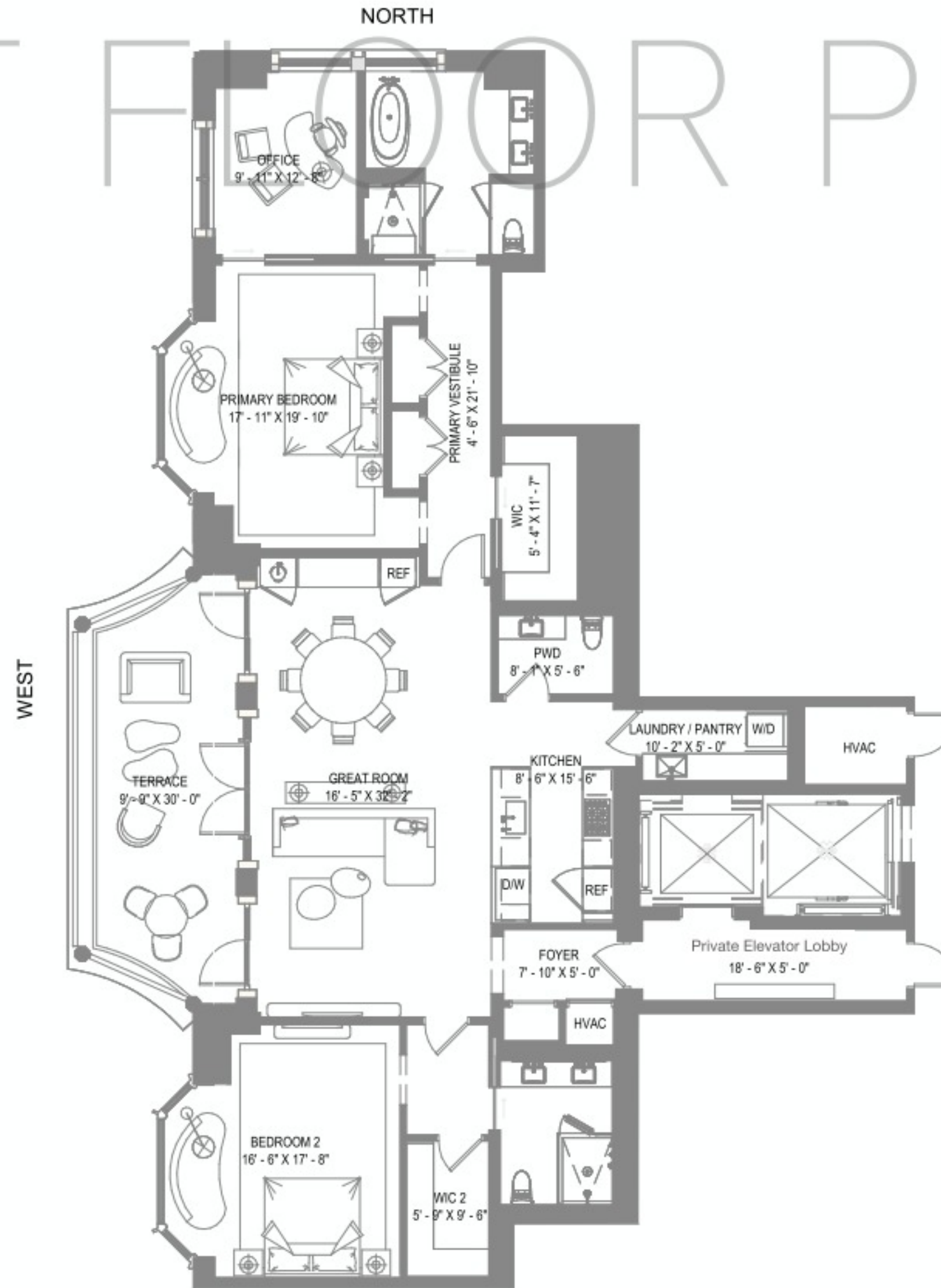
PARK ONLY

Typical Tier 2 West Residence Floors 12-18

2 BEDROOMS
2 BATHROOMS
1 POWDER ROOM

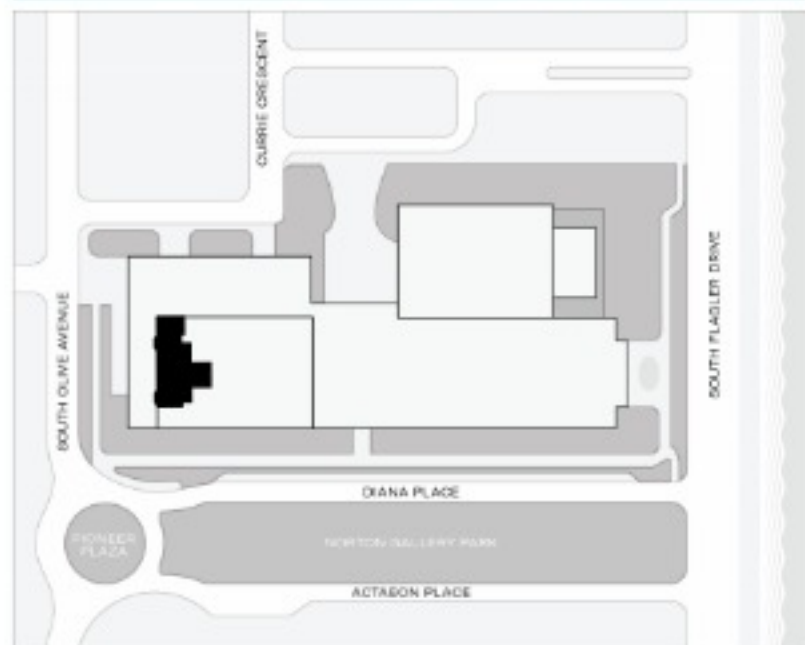
INTERIOR AREA: 2,594 SQ. FT.
EXTERIOR AREA: 340 SQ. FT.

- KEYED ELEVATORS
- SEPARATE GUEST ENTRY
- FOYER
- OPEN TERRACE
- EXPANSIVE GREAT ROOM WITH WET BAR
- OFFICE
- LAUNDRY / PANTRY



INTRACOASTAL / OCEAN

Please note: This marketing floor plan has not been finalized and is subject to minor changes.



TEL: 561.867.9580 INFO@SOUTHFLAGLERHOUSE.COM WWW.SOUTHFLAGLERHOUSE.COM

EXCLUSIVE SALES BY SUZANNE FRISBIE OF FRISBIE PALM BEACH WITH CORCORAN SUNSHINE MARKETING GROUP

Equal Housing Opportunity. There are various methods for calculating the square footage of a Unit and depending on the method of calculation, the quoted square footage of a Unit in advertising materials may vary from the square footage of a Unit as stated or described in the Prospectus and the Declaration. The dimensions of the Unit set forth on the previous page have been calculated from the exterior boundaries of the exterior walls, without reduction for common elements such as structural walls and other interior structural components of the building. As such, the area set forth on the previous page will be larger than the area calculated in the manner provided in the Declaration. For the area of the Unit calculated in accordance with the technical definition of the Unit, see Exhibit "3" to the Declaration. All depictions of appliances, fixtures, furnishings, counters, soffits, and other matters of detail, including, without limitation, items of finish and decoration, are conceptual only and are not necessarily included in each Unit. All dimensions are approximate and may vary with actual construction. All floor plans are subject to change. Note that measurements of rooms set forth on this floor plan are generally taken at the greatest points of each given room (as if the room were a perfect rectangle), without regard for any cutouts. Accordingly, the area of the actual room will typically be smaller than the product obtained by multiplying the stated length times width. Consult the Developer's Prospectus for information regarding what is offered with the Unit and for the calculation of the Unit square footage, dimensions, and floor area. This Condominium is being developed by Flagler Towers Project DEV LLC, ("Developer"). Any and all statements, disclosures and/or representations shall be deemed made by Developer and not by Hines or the Frisbie Group and any purchaser agrees to look solely to Developer (and not to Hines, the Frisbie Group and/or any of its or their affiliates) with respect to any and all matters relating to the marketing and/or development of the Condominium and with respect to the sales of units in the Condominium.

ORAL REPRESENTATIONS CANNOT BE RELIED UPON AS CORRECTLY STATING THE REPRESENTATIONS OF THE DEVELOPER. FOR CORRECT REPRESENTATIONS, MAKE REFERENCE TO THIS BROCHURE AND TO THE DOCUMENTS REQUIRED BY SECTION 718.503, FLORIDA STATUTES, TO BE FURNISHED BY A DEVELOPER TO A BUYER OR LESSEE.





LAKE & PARK TOWER

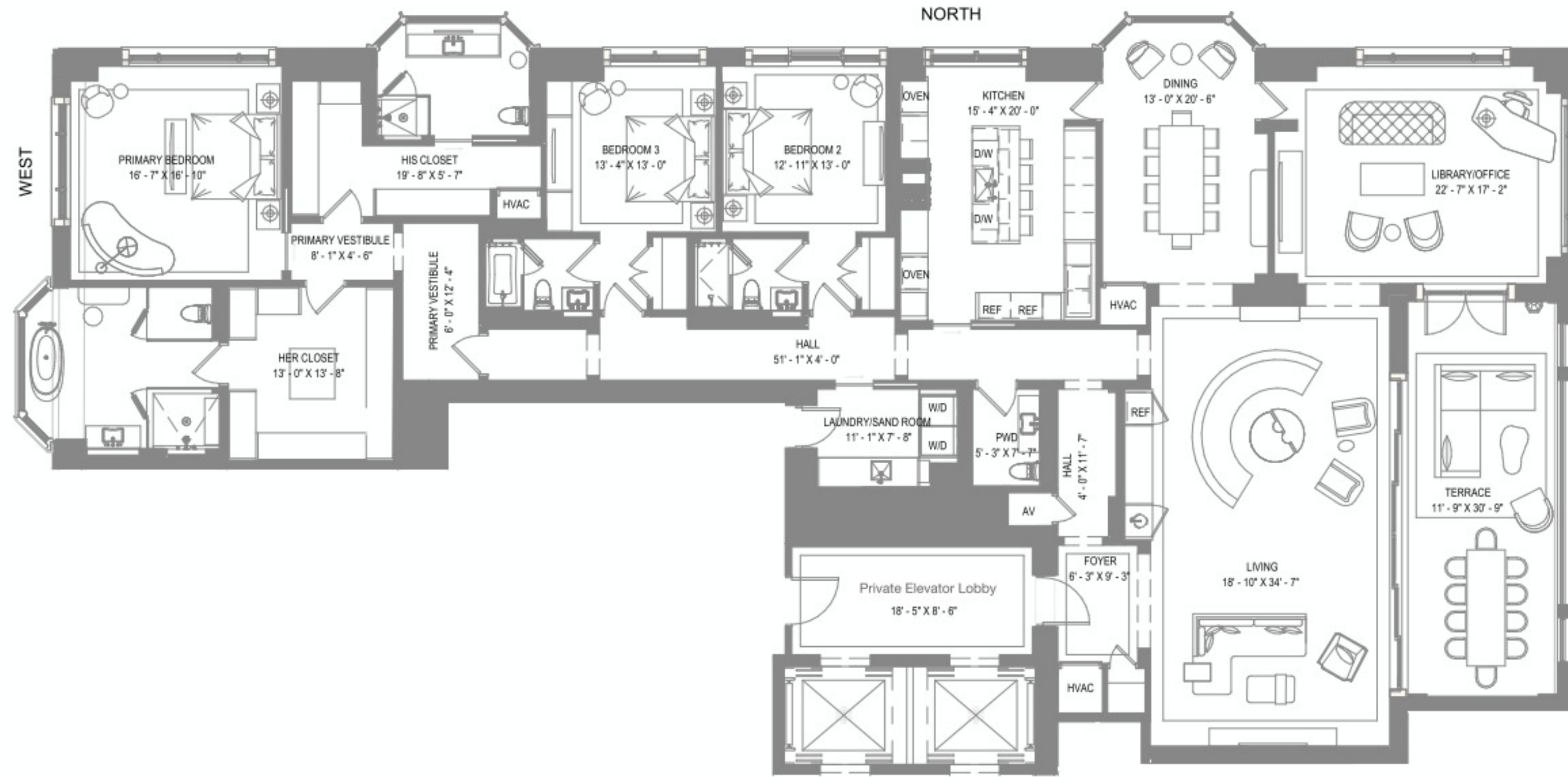
Typical Tier 3 North Residence Floors 21-24

- 3 BEDROOMS
- 4 BATHROOMS
- 1 POWDER ROOM

INTERIOR AREA: 4639 SQ. FT.
EXTERIOR AREA: 446 SQ. FT.

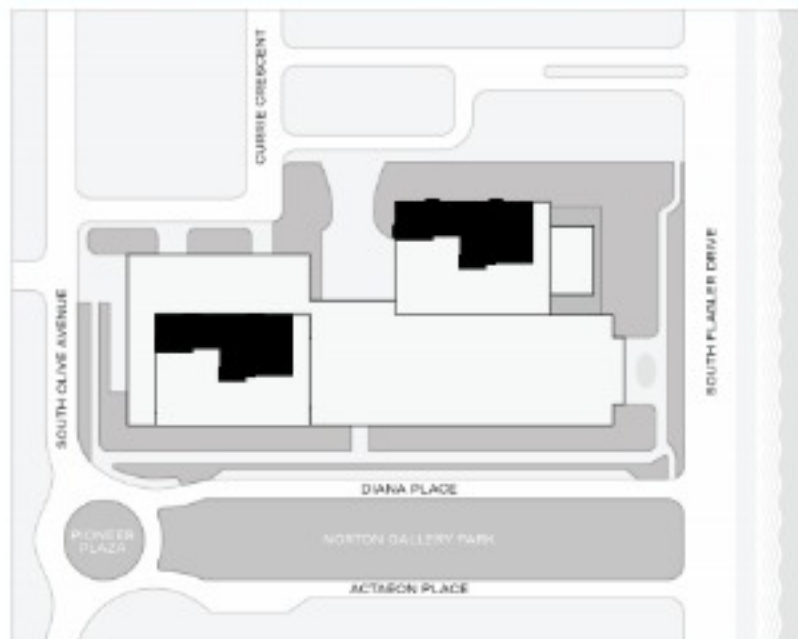
- DUAL KEYED ELEVATORS
- FOYER
- SEPARATE SERVICE ENTRY
- EXPANSIVE LIVING ROOM WITH WET BAR
- KITCHEN
- DINING ROOM
- OFFICE
- COVERED TERRACE
- PRIMARY BEDROOM SUITE WITH DUAL WALK-IN CLOSETS AND WINDOWED BATHROOM
- LAUNDRY / SAND ROOM

DRAFT FLOOR PLAN



INTRACOASTAL / OCEAN

Please note: This marketing floor plan has not been finalized and is subject to minor changes.



TEL: 561.867.9580 INFO@SOUTHFLAGLERHOUSE.COM WWW.SOUTHFLAGLERHOUSE.COM

EXCLUSIVE SALES BY SUZANNE FRISBIE OF FRISBIE PALM BEACH WITH CORCORAN SUNSHINE MARKETING GROUP

Equal Housing Opportunity: There are various methods for calculating the square footage of a Unit and depending on the method of calculation, the quoted square footage of a Unit in advertising materials may vary from the square footage of a Unit as stated or described in the Prospectus and the Declaration. The dimensions of the Unit set forth on the previous page have been calculated from the exterior boundaries of the exterior walls to the centerline of shared walls, without reduction for common elements such as structural walls and other interior structural components of the building. As such, the area set forth on the previous page will be larger than the area calculated in the manner provided in the Declaration. For the area of the Unit calculated in accordance with the technical definition of the Unit, see Exhibit "3" to the Declaration. All depictions of appliances, fixtures, furnishings, counters, soffits, and other matters of detail, including, without limitation, items of finish and decoration, are conceptual only and are not necessarily included in each Unit. All dimensions are approximate and may vary with actual construction. All floor plans are subject to change. Note that measurements of rooms set forth on this floor plan are generally taken at the greatest points of each given room (as if the room were a perfect rectangle), without regard for any cutouts. Accordingly, the area of the actual room will typically be smaller than the product obtained by multiplying the stated length times width. Consult the Developer's Prospectus for information regarding what is offered with the Unit and for the calculation of the Unit square footage, dimensions, and floor area. This Condominium is being developed by Flagler Towers Project DEV LLC ("Developer"). Any and all statements, disclosures and/or representations shall be deemed made by Developer and not by Hines or the Frisbie Group and any purchaser agrees to look solely to Developer (and not to Hines, the Frisbie Group and/or any of its or their affiliates) with respect to any and all matters relating to the marketing and/or development of the Condominium and with respect to the sales of units in the Condominium.

ORAL REPRESENTATIONS CANNOT BE RELIED UPON AS CORRECTLY STATING THE REPRESENTATIONS OF THE DEVELOPER. FOR CORRECT REPRESENTATIONS, MAKE REFERENCE TO THIS BROCHURE AND TO THE DOCUMENTS REQUIRED BY SECTION 718.503, FLORIDA STATUTES, TO BE FURNISHED BY A DEVELOPER TO A BUYER OR LESSEE.





LAKE & PARK TOWER

Typical Tier 3 South Residence Floors 21-24

4 BEDROOMS
5 BATHROOMS
1 POWDER ROOM

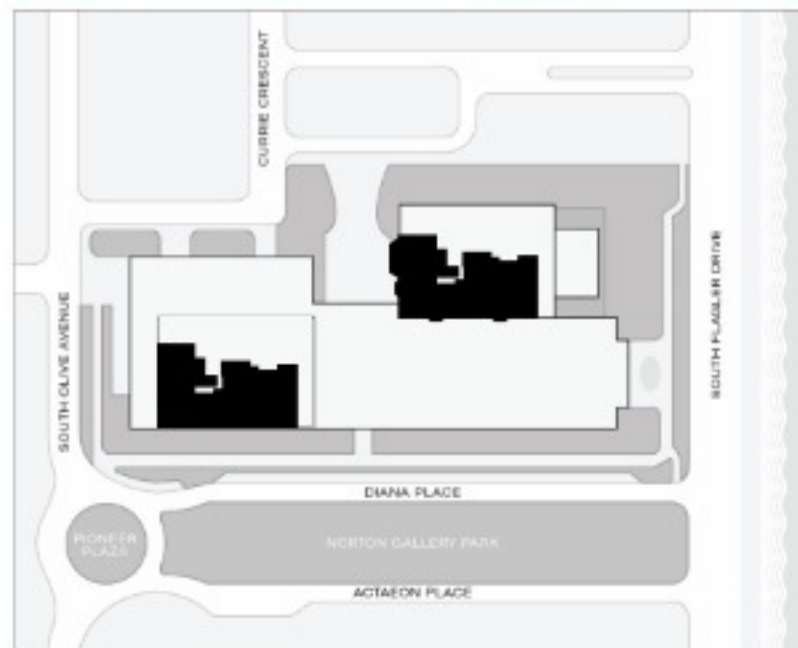
INTERIOR AREA: 5779 SQ. FT.
EXTERIOR AREA: 786 SQ. FT.

- DUAL KEYED ELEVATORS
- SEPERATE GUEST FOYER
- SEPERATE SERVICE ENTRY
- EXPANSIVE LIVING ROOM WITH WET BAR
- KITCHEN
- DINING ROOM
- FAMILY ROOM
- COVERED TERRACE
- OPEN TERRACE
- PRIMARY BEDROOM SUITE WITH DUAL WALK-IN CLOSETS AND WINDOWED BATHROOM
- LAUNDRY / SAND ROOM

DRAFT FLOOR PLAN



Please note: This marketing floor plan has not been finalized and is subject to minor changes.



TEL: 561.867.9580 INFO@SOUTHFLAGLERHOUSE.COM WWW.SOUTHFLAGLERHOUSE.COM

EXCLUSIVE SALES BY SUZANNE FRISBIE OF FRISBIE PALM BEACH WITH CORCORAN SUNSHINE MARKETING GROUP

Equal Housing Opportunity. There are various methods for calculating the square footage of a Unit and depending on the method of calculation, the quoted square footage of a Unit in advertising materials may vary from the square footage of a Unit as stated or described in the Prospectus and the Declaration. The dimensions of the Unit set forth on the previous page have been calculated from the exterior boundaries of the exterior walls to the centerline of shared walls, without reduction for common elements such as structural walls and other interior structural components of the building. As such, the area set forth on the previous page will be larger than the area calculated in the manner provided in the Declaration. For the area of the Unit calculated in accordance with the technical definition of the Unit, see Exhibit "3" to the Declaration. All depictions of appliances, fixtures, furnishings, counters, soffits, and other matters of detail, including, without limitation, items of finish and decoration, are conceptual only and are not necessarily included in each Unit. All dimensions are approximate and may vary with actual construction. All floor plans are subject to change. Note that measurements of rooms set forth on this floor plan are generally taken at the greatest points of each given room (as if the room were a perfect rectangle), without regard for any cutouts. Accordingly, the area of the actual room will typically be smaller than the product obtained by multiplying the stated length times width. Consult the Developer's Prospectus for information regarding what is offered with the Unit and for the calculation of the Unit square footage, dimensions, and floor area. This Condominium is being developed by Flagler Towers Project DEV LLC, ("Developer"). Any and all statements, disclosures and/or representations shall be deemed made by Developer and not by Hines or the Frisbie Group and any purchaser agrees to look solely to Developer (and not to Hines, the Frisbie Group and/or any of its or their affiliates) with respect to any and all matters relating to the marketing and/or development of the Condominium and with respect to the sales of units in the Condominium.

ORAL REPRESENTATIONS CANNOT BE RELIED UPON AS CORRECTLY STATING THE REPRESENTATIONS OF THE DEVELOPER.
FOR CORRECT REPRESENTATIONS, MAKE REFERENCE TO THIS BROCHURE AND TO THE DOCUMENTS REQUIRED BY SECTION 718.503, FLORIDA STATUTES, TO BE FURNISHED BY A DEVELOPER TO A BUYER OR LESSEE.

