

The Mercedes-Benz Pagoda Suite

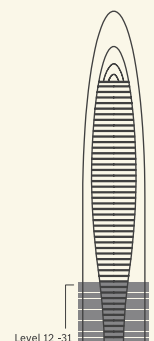
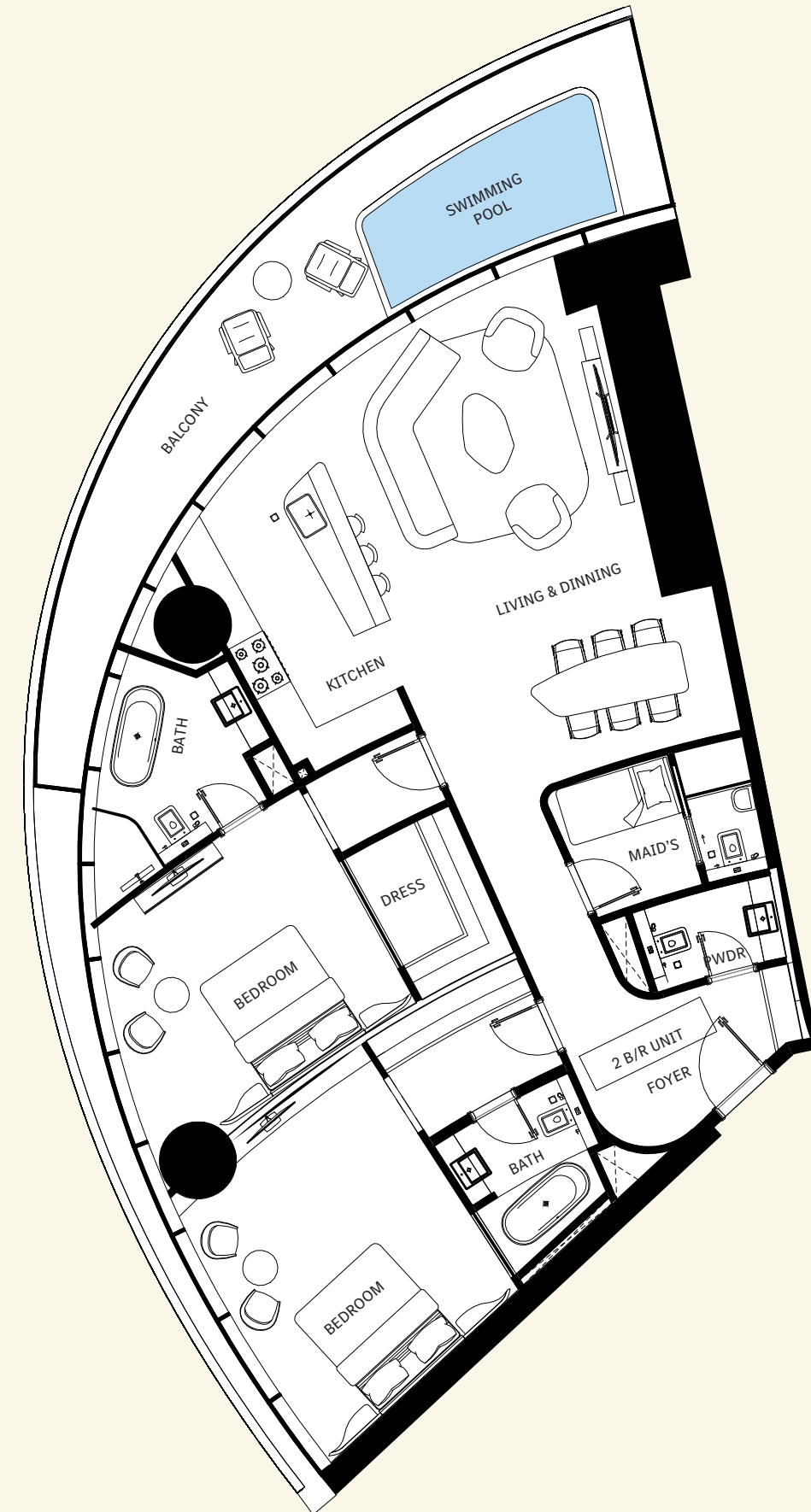
2 Bedroom Unit | Type 1-A

| AREA | SQ.M | SQ.FT |
|-----------------|--------------------|----------------------|
| Suite Area | 142 m ² | 1529 ft ² |
| Balcony Area | 29 m ² | 308 ft ² |
| Total Unit Area | 171 m ² | 1837 ft ² |

| FLAT DESIGN COMPONENTS | |
|------------------------|-------------------|
| Living & Dining | 37 m ² |
| Bedroom 1 | 19 m ² |
| Bedroom 2 | 17 m ² |
| Foyer | 11 m ² |
| Kitchen | 11 m ² |
| Bath 1 | 8 m ² |
| Bath 2 | 5 m ² |
| Dress 1 | 5 m ² |
| Dress 2 | 4 m ² |
| Maid | 4 m ² |
| PDWR | 3 m ² |
| Bath | 2 m ² |
| Lobby | 2 m ² |

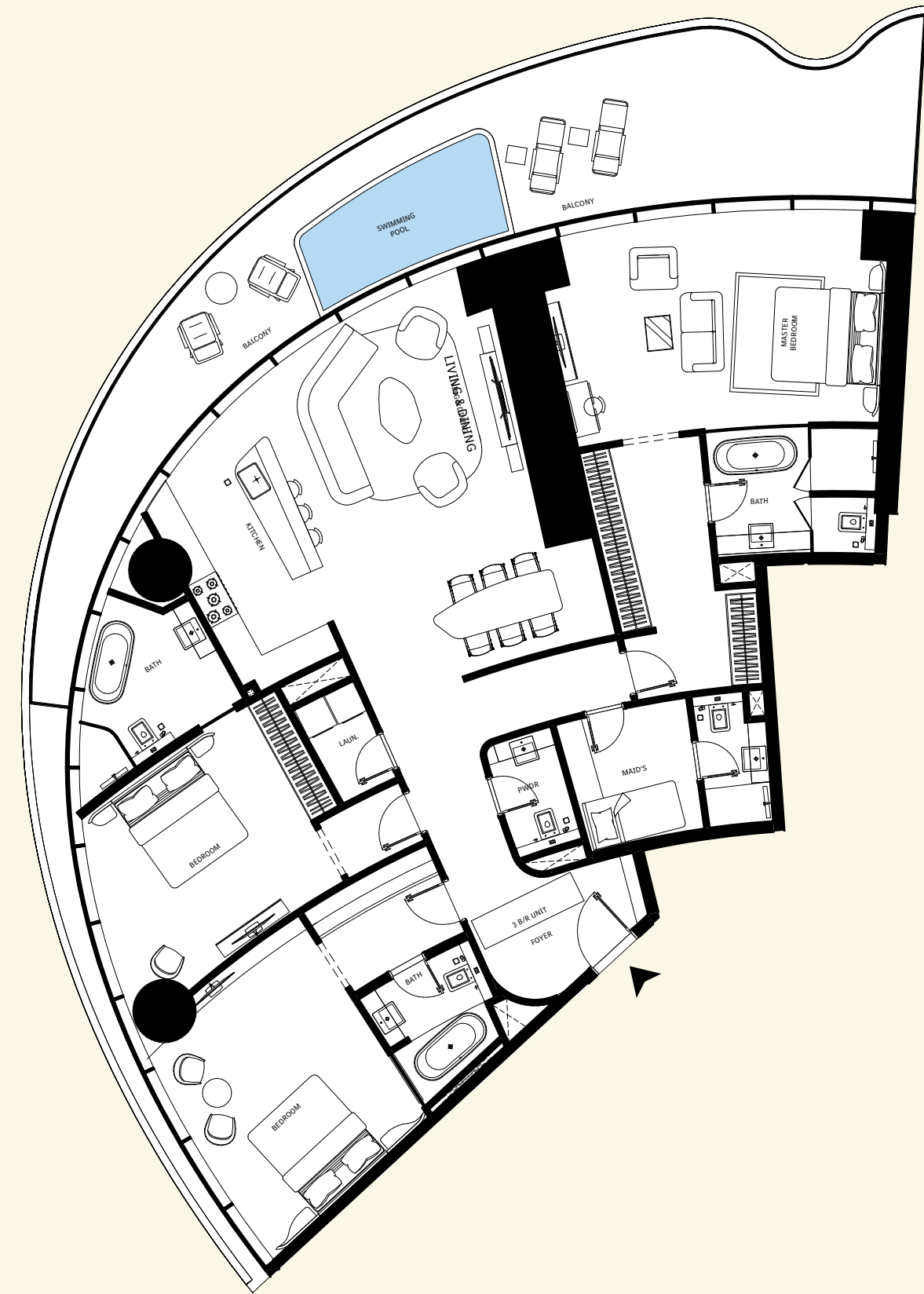
Disclaimer: 1. All stated dimensions and services whether in relation to the building, common areas or individual units are subject to government and local authority approvals. Final dimensions and services will be stated in your sales and purchase agreement 2. All room dimensions are measured to structural elements and exclude wall finishes and construction tolerances. 3. All dimensions have been provided by our consultant architects. 4. All materials, dimensions and drawings are approximate. Information is subject to change without notice. 5. Actual suite area may vary from the stated area. Drawings are not to scale. The Developer reserves the right to make any revisions whatsoever including for aesthetic purposes.

6. Calculation of suite area is measured as the area bounded by the centre line of demising or partition walls separating one unit from another unit, the exterior face of all exterior walls, and the exterior face of the corridor wall enclosing the adjoining unit. 7. Calculation of balcony area is measured as the area bounded by the centre line of demising or partition walls separating one unit from another unit, the outmost face of the enclosing guard and the external face of the adjoining balcony. 8. The units are measured at typical floor in the building. Columns may vary in size depending on the floor level. 9. For each unit type, unit sizes and details might be different and your sales and purchase agreement will contain the actual size of each specific unit.



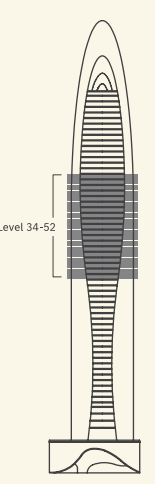
The Grand Mercedes Suite

3 Bedroom Unit | Type 1-A



| AREA | SQ.M | SQ.FT |
|-----------------|--------------------|----------------------|
| Suite Area | 201 m ² | 2166 ft ² |
| Balcony Area | 51 m ² | 544 ft ² |
| Total Unit Area | 252 m ² | 2710 ft ² |

| FLAT DESIGN COMPONENTS | |
|------------------------|-------------------|
| Living & Dining | 35 m ² |
| Master Bedroom | 26 m ² |
| Bedroom 1 | 19 m ² |
| Bedroom 2 | 19 m ² |
| Foyer | 16 m ² |
| Dress | 11 m ² |
| Kitchen | 11 m ² |
| Bath 1 | 8 m ² |
| Bath 2 | 7 m ² |
| Maid | 6 m ² |
| Bath | 5 m ² |
| Dress | 5 m ² |
| Bath | 3 m ² |
| PWDR | 3 m ² |
| Laundry | 2 m ² |
| Lobby | 2 m ² |



Disclaimer: 1. All stated dimensions and services whether in relation to the building, common areas or individual units are subject to government and local authority approvals. Final dimensions and services will be stated in your sales and purchase agreement 2. All room dimensions are measured to structural elements and exclude wall finishes and construction tolerances. 3. All dimensions have been provided by our consultant architects. 4. All materials, dimensions and drawings are approximate. Information is subject to change without notice. 5. Actual suite area may vary from the stated area. Drawings are not to scale. The Developer reserves the right to make any revisions whatsoever including for aesthetic purposes.

6. Calculation of suite area is measured as the area bounded by the centre line of demising or partition walls separating one unit from another unit, the exterior face of all exterior walls, and the exterior face of the corridor wall enclosing the adjoining unit. 7. Calculation of balcony area is measured as the area bounded by the centre line of demising or partition walls separating one unit from another unit, the exterior face of the enclosing guard and the external face of the adjoining balcony. 8. The units are measured at typical floor in the building. Columns may vary in size depending on the floor level. 9. For each unit, unit sizes and details might be different and your sales and purchase agreement will contain the actual size of each specific unit.



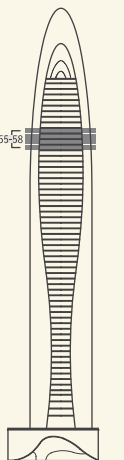
The Mercedes-Benz Vision One-Eleven Penthouse

4 Bedroom Unit | Type 1-A

| AREA | SQ.M | SQ.FT |
|-----------------|--------------------|----------------------|
| Suite Area | 278 m ² | 2995 ft ² |
| Balcony Area | 94 m ² | 1013 ft ² |
| Total Unit Area | 372 m ² | 3007 ft ² |

| FLAT DESIGN COMPONENTS | |
|------------------------|-------------------|
| LIVING & DINING | 63 m ² |
| BEDROOM | 22 m ² |
| GUEST BEDROOM | 21 m ² |
| BEDROOM | 18 m ² |
| BEDROOM | 16 m ² |
| FOYER | 16 m ² |
| PASSAGE | 14 m ² |
| KITCHEN | 10 m ² |
| BATH | 9 m ² |
| BATH | 8 m ² |
| BATH | 7 m ² |
| BATH | 6 m ² |
| MAID | 5 m ² |
| STORE | 5 m ² |
| DRESS | 4 m ² |
| DRESS | 3 m ² |
| BATH | 3 m ² |
| DRESS | 3 m ² |
| LOBBY | 3 m ² |
| DRESS | 2 m ² |
| LAUN. | 2 m ² |
| PWDR | 2 m ² |
| WASH | 2 m ² |
| LOBBY | 1 m ² |
| STORE | 1 m ² |

Disclaimer: 1. All stated dimensions and services whether in relation to the building, common areas or individual units are subject to government and local authority approvals. Final dimensions and services will be stated in your sales and purchase agreement 2. All room dimensions are measured to structural elements and exclude wall finishes and construction tolerances. 3. All dimensions have been provided by our consultant architects. 4. All materials, dimensions and drawings are approximate. Information is subject to change without notice. 5. Actual suite area may vary from the stated area. Drawings are not to scale. The Developer reserves the right to make any revisions whatsoever including for aesthetic purposes.



6. Calculation of suite area is measured as the area bounded by the centre line of demising or partition walls separating one unit from another unit, the exterior face of all exterior walls, and the exterior face of the corridor wall enclosing the adjoining unit. 7. Calculation of balcony area is measured as the area bounded by the centre line of demising or partition walls separating one unit from another unit, the exterior face of the enclosing guard and the external face of the adjoining balcony. 8. The units are measured at typical floor in the building. Columns may vary in size depending on the floor level. 9. For each unit, unit sizes and details might be different and your sales and purchase agreement will contain the actual size of each specific unit.

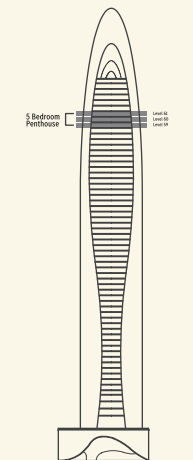
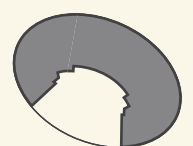
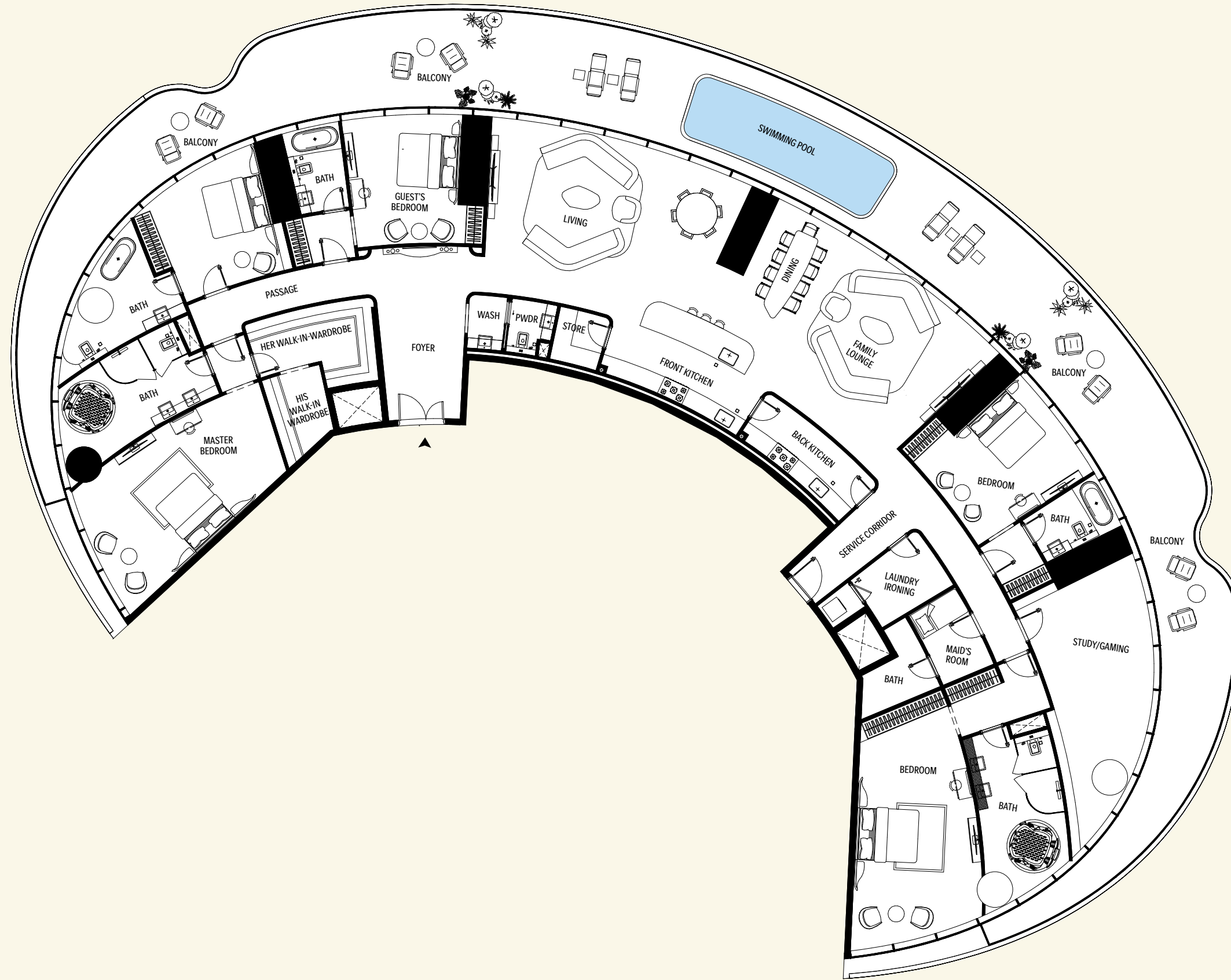


The Mercedes-Benz Gullwing Penthouse

5 Bedroom | Penthouse

| AREA | SQ.M | SQ.FT |
|-----------------|--------------------|----------------------|
| Suite Area | 456 m ² | 4911 ft ² |
| Balcony Area | 184 m ² | 1980 ft ² |
| Total Unit Area | 640 m ² | 6891 ft ² |

| FLAT DESIGN COMPONENTS | |
|------------------------|-------------------|
| LIVING | 36 m ² |
| FAMILY LOUNGE | 34 m ² |
| BEDROOM | 31 m ² |
| DINING | 30 m ² |
| MASTER BEDROOM | 30 m ² |
| STUDY / GAMING | 29 m ² |
| BEDROOM | 19 m ² |
| BEDROOM | 18 m ² |
| GUESTS BEDROOM | 18 m ² |
| FOYER | 17 m ² |
| SERVICE CORRIDOR | 16 m ² |
| BATH | 15 m ² |
| BATH | 15 m ² |
| BATH | 11 m ² |
| FRONT KITCHEN | 10 m ² |
| HER WALK-IN WARDROBE | 9 m ² |
| BACK KITCHEN | 8 m ² |
| PASSAGE | 8 m ² |
| BATH | 6 m ² |
| BATH | 6 m ² |
| DRESS | 6 m ² |
| LAUNDRY IRONING | 6 m ² |
| BATH | 5 m ² |
| HIS WALK-IN WARDROBE | 5 m ² |
| MAID | 5 m ² |
| DRESS | 3 m ² |
| DRESS | 3 m ² |
| STORE | 3 m ² |
| LOBBY | 2 m ² |
| PWDR | 2 m ² |
| WASH | 2 m ² |
| WM. | 1 m ² |



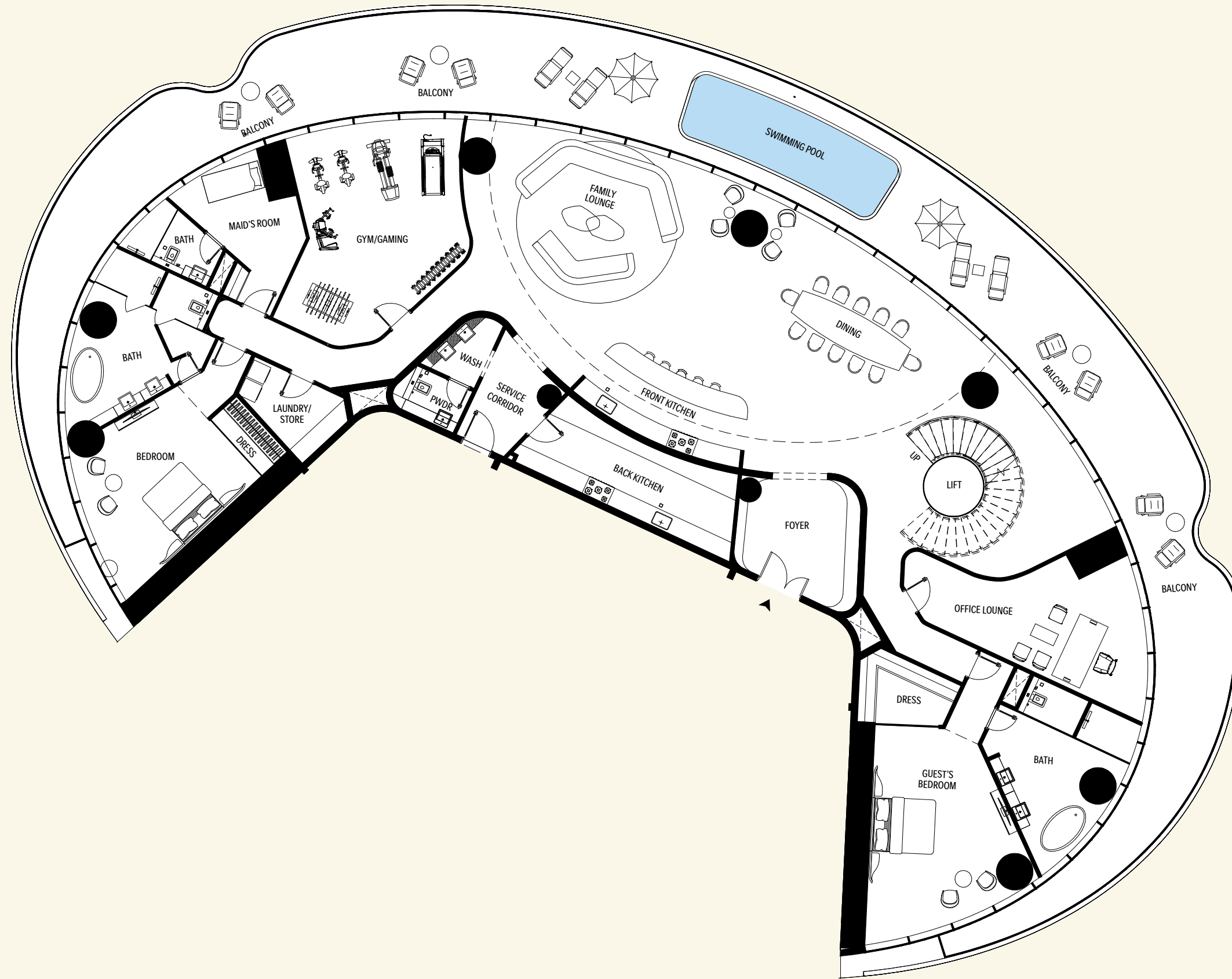
Disclaimer: 1. All stated dimensions and services whether in relation to the building, common areas or individual units are subject to government and local authority approvals. Final dimensions and services will be stated in your sales and purchase agreement 2. All room dimensions are measured to structural elements and exclude wall finishes and construction tolerances. 3. All dimensions have been provided by our consultant architects. 4. All materials, dimensions and drawings are approximate. Information is subject to change without notice. 5. Actual suite area may vary from the stated area. Drawings are not to scale. The Developer reserves the right to make any revisions whatsoever including for aesthetic purposes.

6. Calculation of suite area is measured as the area bounded by the centre line of demising or partition walls separating one unit from another unit, the exterior face of all exterior walls, and the exterior face of the corridor wall enclosing the adjoining unit. 7. Calculation of balcony area is measured as the area bounded by the centre line of demising or partition walls separating one unit from another unit, the exterior face of the enclosing guard and the external face of the adjoining balcony. 8. The units are measured at typical floor in the building. Columns may vary in size depending on the floor level. 9. For each unit, the unit sizes and details might be different and your sales and purchase agreement will contain the actual size of each specific unit.



The Mercedes-Benz Vision EQ Silver Arrow Penthouse

The Duplex Penthouse | Level 1

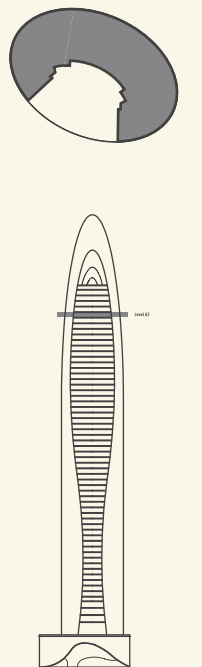


| AREA | SQ.M | SQ.FT |
|-----------------|--------------------|----------------------|
| Suite Area | 457 m ² | 4923 ft ² |
| Balcony Area | 185 m ² | 1987 ft ² |
| Total Unit Area | 642 m ² | 6909 ft ² |

| FLAT DESIGN COMPONENTS | |
|------------------------|-------------------|
| FAMILY LOUNGE | 44 m ² |
| LIVING | 41 m ² |
| GYM / GAMING | 37 m ² |
| STAIR LOBBY | 33 m ² |
| GUESTS BEDROOM | 29 m ² |
| DINING | 28 m ² |
| OFFICE LOUNGE | 27 m ² |
| BEDROOM | 24 m ² |
| BATH | 20 m ² |
| BATH | 19 m ² |
| BACK KITCHEN | 18 m ² |
| FOYER | 14 m ² |
| MAID'S ROOM | 13 m ² |
| PASSAGE | 13 m ² |
| FRONT KITCHEN | 12 m ² |
| PASSAGE | 8 m ² |
| LAUN. / STORE | 7 m ² |
| SERVICE LOBBY | 7 m ² |
| DRESS | 6 m ² |
| BATH | 5 m ² |
| DRESS | 3 m ² |
| LIFT | 3 m ² |
| LOBBY | 3 m ² |
| LOBBY | 3 m ² |
| PWDR | 3 m ² |
| WASH | 3 m ² |

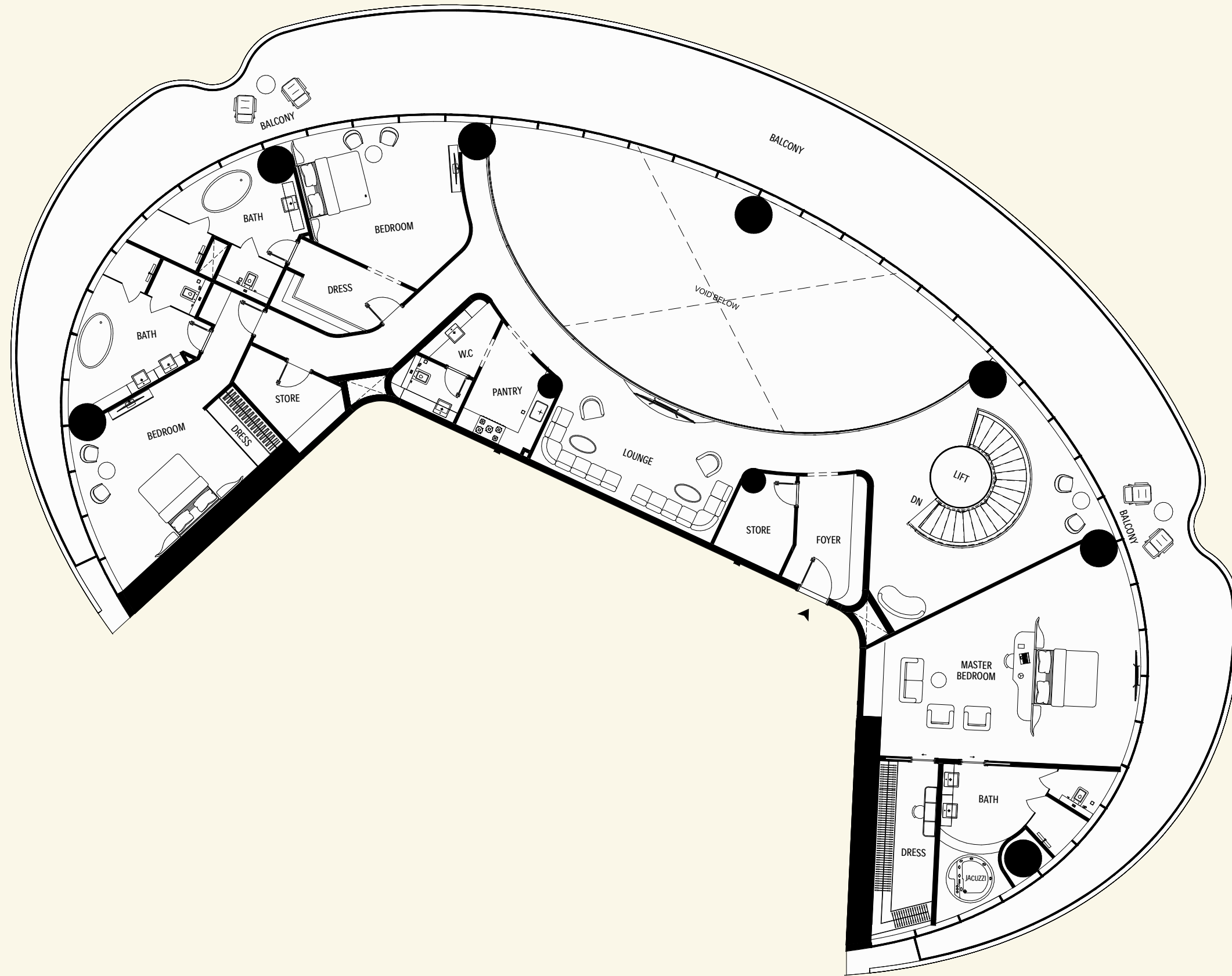
Disclaimer: 1. All stated dimensions and services whether in relation to the building, common areas or individual units are subject to government and local authority approvals. Final dimensions and services will be stated in your sales and purchase agreement 2. All room dimensions are measured to structural elements and exclude wall finishes and construction tolerances. 3. All dimensions have been provided by our consultant architects. 4. All materials, dimensions and drawings are approximate. Information is subject to change without notice. 5. Actual suite area may vary from the stated area. Drawings are not to scale. The Developer reserves the right to make any revisions whatsoever including for aesthetic purposes.

6. Calculation of suite area is measured as the area bounded by the centre line of demising or partition walls separating one unit from another unit, the exterior face of all exterior walls, and the exterior face of the corridor wall enclosing the adjoining unit. 7. Calculation of balcony area is measured as the area bounded by the centre line of demising or partition walls separating one unit from another unit, the exterior face of the enclosing guard and the external face of the adjoining balcony. 8. The units are measured at typical floor in the building. Columns may vary in size depending on the floor level. 9. For each unit, unit sizes and details might be different and your sales and purchase agreement will contain the actual size of each specific unit.



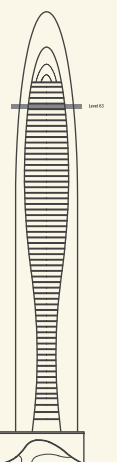
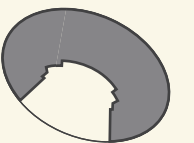
The Mercedes-Benz Vision EQ Silver Arrow Penthouse

The Duplex Penthouse | Level 2



| AREA | SQ.M | SQ.FT |
|-----------------|--------------------|----------------------|
| Suite Area | 331 m ² | 3566 ft ² |
| Balcony Area | 186 m ² | 2000 ft ² |
| Total Unit Area | 517 m ² | 5566 ft ² |

| FLAT DESIGN COMPONENTS | |
|------------------------|-------------------|
| MASTER BEDROOM | 49 m ² |
| STAIR LOBBY | 38 m ² |
| BEDROOM | 25 m ² |
| LOUNGE | 24 m ² |
| BEDROOM | 23 m ² |
| PASSAGE | 19 m ² |
| BATH | 18 m ² |
| BATH | 17 m ² |
| BATH | 16 m ² |
| DRESS | 11 m ² |
| FOYER | 9 m ² |
| DRESS | 8 m ² |
| PANTRY | 7 m ² |
| STORE | 7 m ² |
| STORE | 6 m ² |
| LOBBY | 5 m ² |
| PASSAGE | 5 m ² |
| DRESS | 3 m ² |
| LIFT | 3 m ² |
| WASH | 3 m ² |
| WC | 3 m ² |



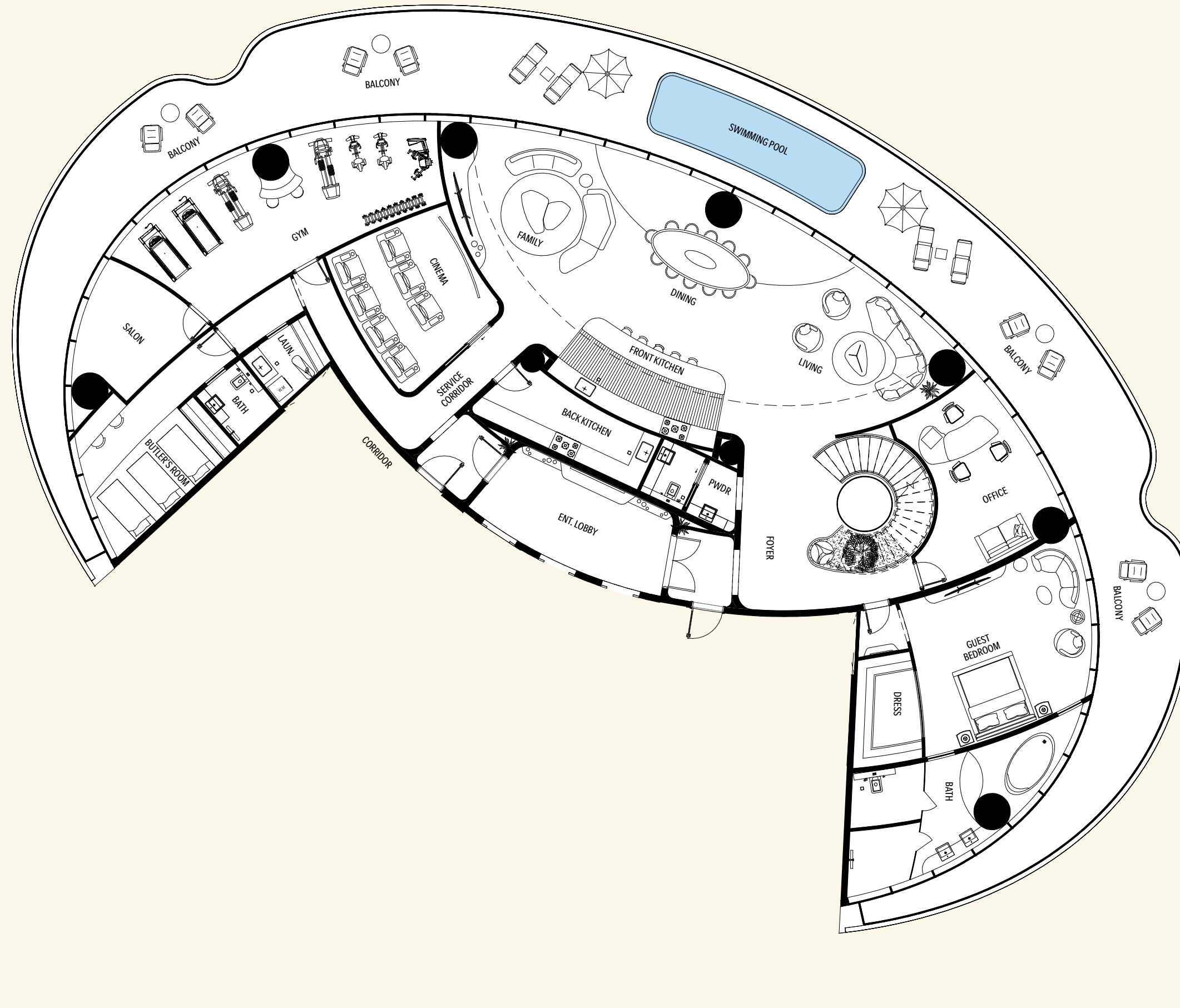
Disclaimer: 1. All stated dimensions and services whether in relation to the building, common areas or individual units are subject to government and local authority approvals. Final dimensions and services will be stated in your sales and purchase agreement 2. All room dimensions are measured to structural elements and exclude wall finishes and construction tolerances. 3. All dimensions have been provided by our consultant architects. 4. All materials, dimensions and drawings are approximate. Information is subject to change without notice. 5. Actual suite area may vary from the stated area. Drawings are not to scale. The Developer reserves the right to make any revisions whatsoever including for aesthetic purposes.

6. Calculation of suite area is measured as the area bounded by the centre line of demising or partition walls separating one unit from another unit, the exterior face of all exterior walls, and the exterior face of the corridor wall enclosing the adjoining unit. 7. Calculation of balcony area is measured as the area bounded by the centre line of demising or partition walls separating one unit from another unit, the exterior face of the enclosing guard and the external face of the adjoining balcony. 8. The units are measured at typical floor in the building. Columns may vary in size depending on the floor level. 9. For each unit, unit sizes and details might be different and your sales and purchase agreement will contain the actual size of each specific unit.



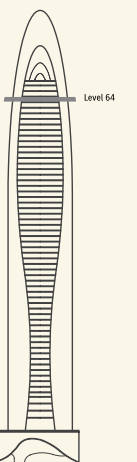
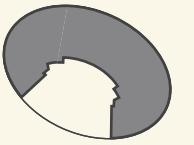
The Mercedes-Benz Uhlenhaut Coupé Penthouse

The Triplex Penthouse | Level 1



| AREA | SQ.M | SQ.FT |
|-----------------|--------------------|----------------------|
| Suite Area | 410 m ² | 4416 ft ² |
| Balcony Area | 188 m ² | 2022 ft ² |
| Total Unit Area | 598 m ² | 6437 ft ² |

| FLAT DESIGN COMPONENTS | |
|------------------------|-------------------|
| GYM | 40 m ² |
| FAMILY | 34 m ² |
| GUEST BEDROOM | 34 m ² |
| LIVING | 34 m ² |
| FOYER | 31 m ² |
| DINING | 28 m ² |
| BATH | 24 m ² |
| OFFICE | 23 m ² |
| BUTLER'S ROOM | 21 m ² |
| CINEMA | 20 m ² |
| ENT. LOBBY | 18 m ² |
| SERVICE CORRIDOR | 17 m ² |
| FRONT KITCHEN | 14 m ² |
| SALON | 13 m ² |
| BACK KITCHEN | 11 m ² |
| DRESS | 7 m ² |
| LOBBY | 5 m ² |
| LOBBY | 5 m ² |
| BATH | 4 m ² |
| LAUN. | 4 m ² |
| PWDR | 3 m ² |
| WASH | 3 m ² |



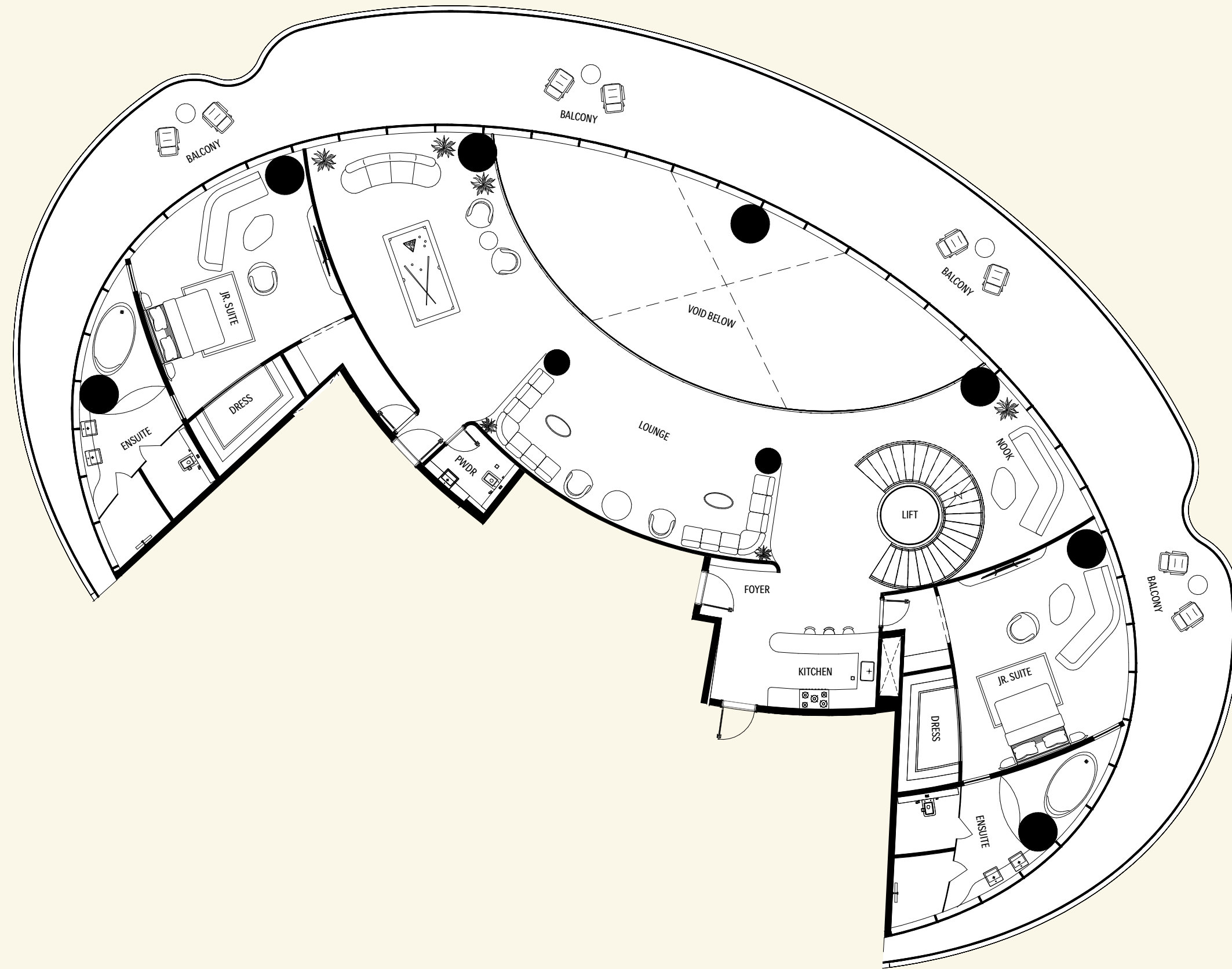
Disclaimer: 1. All stated dimensions and services whether in relation to the building, common areas or individual units are subject to government and local authority approvals. Final dimensions and services will be stated in your sales and purchase agreement 2. All room dimensions are measured to structural elements and exclude wall finishes and construction tolerances. 3. All dimensions have been provided by our consultant architects. 4. All materials, dimensions and drawings are approximate. Information is subject to change without notice. 5. Actual suite area may vary from the stated area. Drawings are not to scale. The Developer reserves the right to make any revisions whatsoever including for aesthetic purposes.

6. Calculation of suite area is measured as the area bounded by the centre line of demising or partition walls separating one unit from another unit, the exterior face of all exterior walls, and the exterior face of the corridor wall enclosing the adjoining unit. 7. Calculation of balcony area is measured as the area bounded by the centre line of demising or partition walls separating one unit from another unit, the exterior face of the enclosing guard and the external face of the adjoining balcony. 8. The units are measured at typical floor in the building. Columns may vary in size depending on the floor level. 9. For each unit, unit sizes and details might be different and your sales and purchase agreement will contain the actual size of each specific unit.



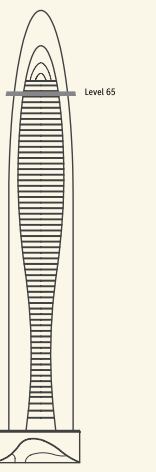
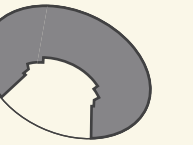
The Mercedes-Benz Uhlenhaut Coupé Penthouse

The Triplex Penthouse | Level 2



| AREA | SQ.M | SQ.FT |
|-----------------|--------------------|----------------------|
| Suite Area | 324 m ² | 3483 ft ² |
| Balcony Area | 191 m ² | 2055 ft ² |
| Total Unit Area | 515 m ² | 5538 ft ² |

| FLAT DESIGN COMPONENTS | |
|------------------------|-------------------|
| LOUNGE | 91 m ² |
| NOOK | 50 m ² |
| JR. SUITE | 39 m ² |
| JR. SUITE | 37 m ² |
| ENSUITE | 22 m ² |
| ENSUITE | 22 m ² |
| LOBBY | 12 m ² |
| FOYER | 9 m ² |
| KITCHEN | 8 m ² |
| DRESS | 6 m ² |
| DRESS | 6 m ² |
| PWDR | 4 m ² |



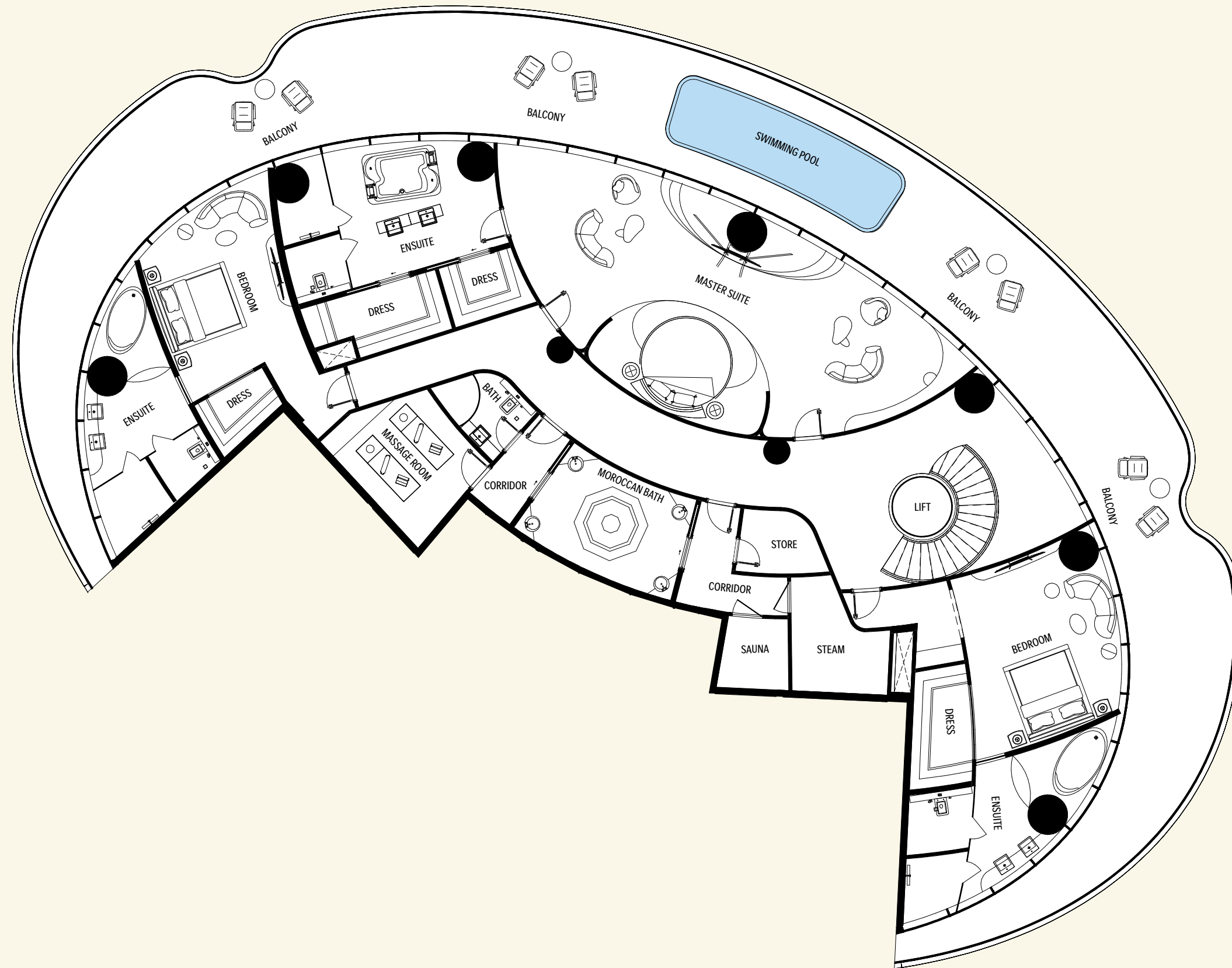
Disclaimer: 1. All stated dimensions and services whether in relation to the building, common areas or individual units are subject to government and local authority approvals. Final dimensions and services will be stated in your sales and purchase agreement 2. All room dimensions are measured to structural elements and exclude wall finishes and construction tolerances. 3. All dimensions have been provided by our consultant architects. 4. All materials, dimensions and drawings are approximate. Information is subject to change without notice. 5. Actual suite area may vary from the stated area. Drawings are not to scale. The Developer reserves the right to make any revisions whatsoever including for aesthetic purposes.

6. Calculation of suite area is measured as the area bounded by the centre line of demising or partition walls separating one unit from another unit, the exterior face of all exterior walls, and the exterior face of the corridor wall enclosing the adjoining unit. 7. Calculation of balcony area is measured as the area bounded by the centre line of demising or partition walls separating one unit from another unit, the exterior face of the enclosing guard and the external face of the adjoining balcony. 8. The units are measured at typical floor in the building. Columns may vary in size depending on the floor level. 9. For each unit, unit sizes and details might be different and your sales and purchase agreement will contain the actual size of each specific unit.



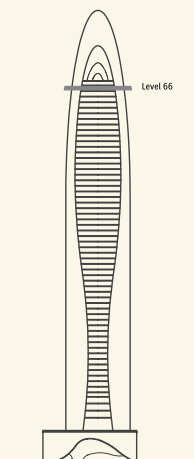
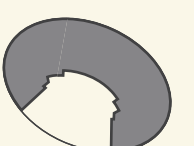
The Mercedes-Benz Uhlenhaut Coupé Penthouse

The Triplex Penthouse | Level 3



| AREA | SQ.M | SQ.FT |
|-----------------|--------------------|----------------------|
| Suite Area | 195 m ² | 2104 ft ² |
| Balcony Area | 374 m ² | 4023 ft ² |
| Total Unit Area | 569 m ² | 6126 ft ² |

| FLAT DESIGN COMPONENTS | |
|------------------------|-------------------|
| MASTER SUITE | 76 m ² |
| LOBBY | 60 m ² |
| BEDROOM | 31 m ² |
| BEDROOM | 26 m ² |
| ENSUITE | 25 m ² |
| BATH | 20 m ² |
| BATH | 20 m ² |
| MOROCCAN BATH | 15 m ² |
| MASSAGE ROOM | 13 m ² |
| STEAM | 8 m ² |
| DRESS | 7 m ² |
| CORRIDOR | 6 m ² |
| DRESS | 6 m ² |
| BATH | 5 m ² |
| CORRIDOR | 4 m ² |
| DRESS | 4 m ² |
| DRESS | 4 m ² |
| SAUNA | 4 m ² |
| STORE | 4 m ² |



Disclaimer: 1. All stated dimensions and services whether in relation to the building, common areas or individual units are subject to government and local authority approvals. Final dimensions and services will be stated in your sales and purchase agreement 2. All room dimensions are measured to structural elements and exclude wall finishes and construction tolerances. 3. All dimensions have been provided by our consultant architects. 4. All materials, dimensions and drawings are approximate. Information is subject to change without notice. 5. Actual suite area may vary from the stated area. Drawings are not to scale. The Developer reserves the right to make any revisions whatsoever including for aesthetic purposes.

6. Calculation of suite area is measured as the area bounded by the centre line of demising or partition walls separating one unit from another unit, the exterior face of all exterior walls, and the exterior face of the corridor wall enclosing the adjoining unit. 7. Calculation of balcony area is measured as the area bounded by the centre line of demising or partition walls separating one unit from another unit, the exterior face of the enclosing guard and the external face of the adjoining balcony. 8. The units are measured at typical floor in the building. Columns may vary in size depending on the floor level. 9. For each unit, unit sizes and details might be different and your sales and purchase agreement will contain the actual size of each specific unit.

